



TAITO CITY LIFE NEWS

2024.12 Vol. 37

Published by: Human Rights and Diversity Promotion Section, General Affairs Division, Taito City Office

4-5-6 Higashi-Ueno, Taito-ku 110-8615, Tel: 03-5246-1116

https://www.city.taito.lg.jp/kurashi/foreigner/jigyoannai/life_news.html

The City Office offers multilingual interpretation services via tablet devices. Please inquire about this at the service window you visit for procedures.

The hours these services are available differ depending on the language.

<https://www.city.taito.lg.jp/kurashi/foreigner/sodan/sodan.html>

Supported languages: English, Chinese, Korean, Spanish, Portuguese, Vietnamese, Nepali, Filipino (Tagalog), Thai, French, Russian, Hindi, Indonesian, Khmer, Burmese and Malay.



Please check the hours these services are available here



Let's Study Japanese!

● Children's Japanese Class

The children's Japanese class teaches the basics of the Japanese language to elementary and junior high school students whose native language is not Japanese.

[Class Schedule] (subject to change)

2025

January 12 (Sun.), 19 (Sun.), 26 (Sun.)

February 2 (Sun.), 9 (Sun.), 16 (Sun.), 23 (Sun.)

March 2 (Sun.), 8 (Sat.), 16 (Sun.), 23 (Sun.), 30 (Sun.)

Note: Please note that the class on March 8 is held on Saturday.

Time: 9:30 to 11:30 a.m.

Location: Lifelong Learning Center

Fees: Free

Applications: Accepted starting on Monday, December 2.

Note: The application process will be stopped when we reach capacity. Please note that first-time applicants will be given priority if there are more applications than capacity.



Please use the QR code to visit this website for more details.

● Japanese-Language Study Support Volunteer Groups

There are volunteer groups in Taito City that will help you study the Japanese language. You don't need to register or make a reservation; just check the schedule and show up at the time and place the group is meeting. For more information, please visit the city website.



Please use the QR code to visit this website for more details.

Note: We are also recruiting Japanese-language instructors and other staff.

Online Japanese-Language Study

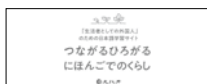
There are various websites where you can study Japanese online. **You must pay to use some sites, so please check them for more information.** In addition to the websites listed here, you can find a more complete list on the city website.



Please visit this website for more details.

～ Japanese for Everyday Life ～

Connect and Enhance Your Life in Japanese (Agency for Cultural Affairs)



There are many videos to help you learn the Japanese necessary for daily life. These videos re-create daily life scenes to teach the basics of the Japanese language



<https://tsunagarujp.bunka.go.jp/>

～ Japanese for Daily News and Work ～

NHK World-Japan (NHK)



This is a portal site for NHK's Japanese-language learning programs. You can find programs suited for beginners and up to intermediate learners, ranging from entry-level lessons to programs for people working in Japan. You can also listen to news programs that use simple Japanese.



<https://www3.nhk.or.jp/nhkworld/en/learnjapanese/>

～ For Elementary and Junior High School Children ～

Japanese-Language Study (Tokyo Metropolitan Board of Education)



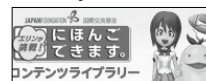
This website helps foreign children learn the basics of life in Japan, including school life information and common phrases necessary for conversations. It uses cute illustrations to make it easy for children to understand.



https://www.kyoiku.metro.tokyo.lg.jp/school/japanese/learning_japanese.html

～ Junior High and High School Students ～

Erin's Challenge! I Can Speak Japanese. Contents Library (The Japan Foundation Japanese-Language Institute, Urawa)



You can learn Japanese language and culture through a variety of videos about Japanese high school life.



<https://www.erin.jp/f.go.jp/>

～ Learn Simple Japanese through Conversations and Grammar ～

NHK Easy Japanese (NHK)



This is a beginner course using simple Japanese, consisting of a conversation component and a grammar component. Explanations of key phrases and practice problems after completing each lesson are available.



<https://www.nhk.or.jp/lesson/en/>

About Declaration of Resident Tax (special city tax and Tokyo metropolitan resident tax)

Your resident tax is the tax assessed by the city or municipality where you reside, and is the source of funding for administrative services the community conducts. All individuals having income of a certain level and above must pay tax.

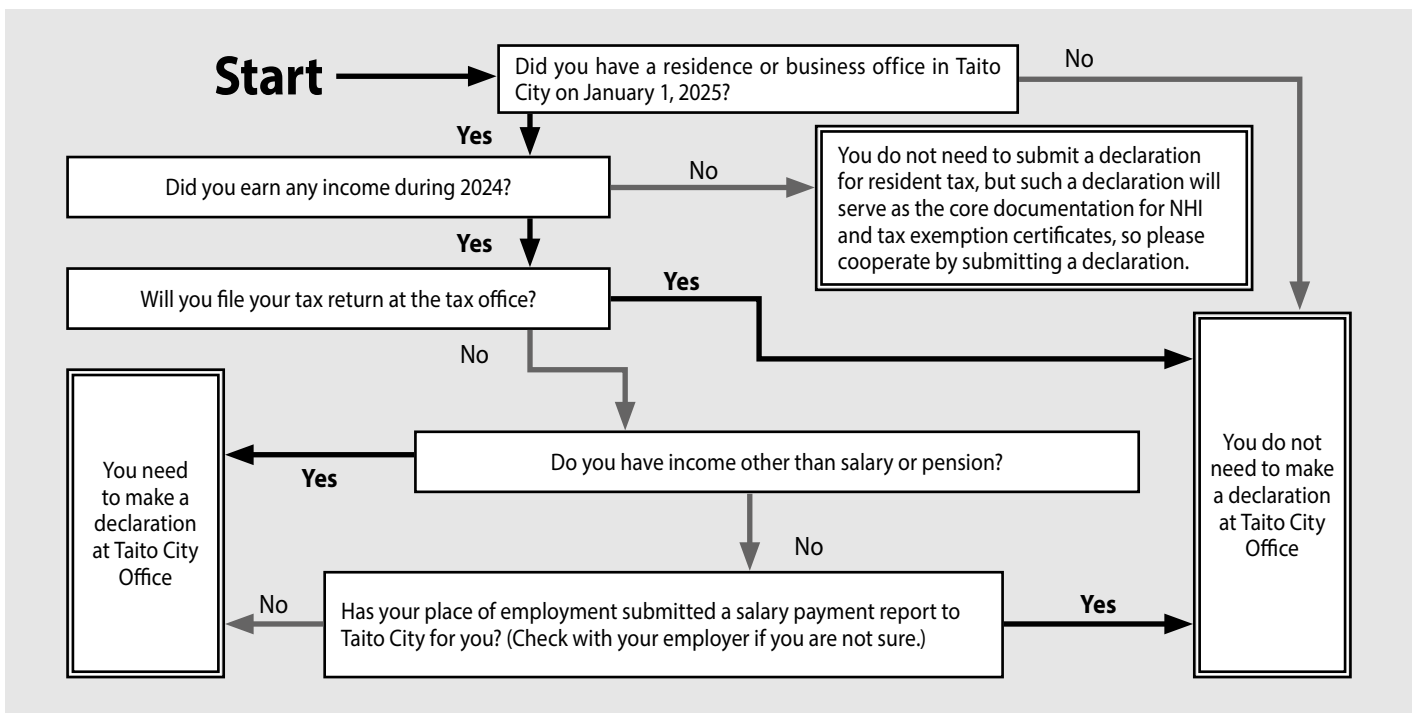
Every year by March 15, you must submit a declaration of your income to the tax office or city office for the period from January 1 to December 31 of the previous year to the city or municipality where you resided on January 1 of that year. Your resident tax is calculated on the basis of the income declaration

form you submitted.

Taito City sends a declaration form to individuals who may need to make a tax declaration to the city office. Please fill in the necessary information and submit or mail it to the Taxation Subsection. Please contact the number below if you do not receive a declaration form or have any other questions.

Please note that if you submitted a declaration of your income tax to the tax office, you are not required to submit a resident tax declaration.

★Individuals who need to submit a declaration Please use the below chart as a reference



Tax declarations are also accepted via postal mail. Please use the enclosed return envelope.

Inquiry: Taxation Subsection, Tax Administration Section, **Tel:** 03-5246-1103 to 1105

Reminder to Enroll in National Pension

The National Pension System provides a pension to enrolled members who meet certain conditions when they reach old age, become disabled due to injury or illness, or die. All residents of Japan aged 20 to 59 must join, except those employed by a company who are enrolled in their firm's employee pension program. This includes foreign residents of Japan, who must pay premiums just like any other resident.

The National Pension premium is 16,980 yen (uniform monthly amount for FY2024).

There are exemption programs for students, individuals with low incomes, and others who have difficulty paying premiums. You will need to apply and be approved for an exemption. Apply at the Taito City Office or a pension office.

If you have paid insurance premiums for a total of 120 months (10 years) or more, including months for which you

received an exemption, you will be eligible to receive the basic old-age pension from the age of 65. Even if you are not eligible to receive the pension, if you are a foreign national and have paid premiums for a total of at least six months, you can apply for a lump-sum withdrawal payment when leaving Japan.

For more information, please call the Ueno Pension Office (03-3824-2511) or visit the Japan Pension Service website (<https://www.nenkin.go.jp/international/index.html>).

Inquiries: National Pension Subsection, Residents' Affairs Section
Tel: 03-5246-1262



You can also access the website by scanning this code.

Ask Questions 24/7!

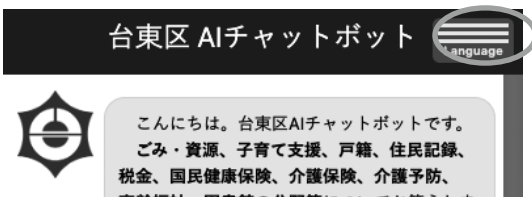
▶ Try the AI Chatbot

How to Use

- (1) Click the mark at the bottom right of the Taito City website.



- (2) Click the "Language" button on the upper right of the page that opens. Choose your preferred language.



- (3) Ask a question.

Languages available: English, Chinese (simplified and traditional), Korean, Vietnamese, Filipino (Tagalog), Nepali, Thai, French, Burmese, Uzbek, Indonesian, Russian, Mongolian, Ukrainian

Inquiries: Public Relations Section

Tel: 03-5246-1023

Please Have a Look at the Taito City Newsletter



Various notifications from the Taito City Office are written in the Taito City newsletter.

The newsletter can be viewed in various languages, such as English, Chinese (simplified and traditional),

Korean, Thai, and Indonesian if viewed from the city website or smartphone application "Catalog Pocket."

Note: To read via Catalog Pocket, search for "Taito City" after scanning the two-dimensional code and downloading the app.

Inquiries:

Public Relations Section

Tel: 03-5246-1021



Android



iOS

Taito City's Website Is Viewable in Various Languages

The Taito City website can be viewed in 109 languages.

Languages: English, Chinese (simplified and traditional), Korean, French, Indonesian, Malay, Thai, etc.

▶ Procedure

1. Click the "Foreign Language" button on the upper right side of the website

"Foreign Language" button



2. Choose a language

Inquiries: Public Relations Section, **Tel:** 03-5246-1021

View the Taito City Official YouTube Channel

The public relations programs (news) and other videos the city produces are streaming on YouTube. You can display subtitles using YouTube's automatic translation function:



- (1) Click on the caption button on the bottom right of the video.



- (2) Click on the button, click on "Subtitles/CC," and then select "automatic translation" and choose a language.



Notes:

1. Only English-language translations are available when playing videos on smartphones and the like.
2. Since the channel uses YouTube's automatic translation function, the translation may not be accurate.
3. Depending on the video, the automatic translation function may not be available.

Inquiries: Public Relations Section, **Tel:** 03-5246-1041

Service Counters Open on Second Sundays for Partial Services

Hours: 9 a.m. to 5 p.m.

Location: Taito City Office 1F

Services available:

- ⊙ Matters related to family registry notifications
- ⊙ Issuance of residence records, personal seal registration certificates, and family registry certificates
- ⊙ Matters related to notifications of moving in/out and National Health Insurance enrollment
- ⊙ Matters related to personal seal registration and annulment
- ⊙ Payments for taxes or health insurance premiums and matters related to motorcycle registration
- ⊙ Matters related to various childrearing allowances and medical subsidies for children
- ⊙ Matters related to applications for and issuance of Individual Number cards
- ⊙ Matters related to applications for and issuance of special permanent resident certificates
- ⊙ Consultation on tax payments and health insurance premiums
- ⊙ Matters related to issuance of residence tax (tax exemption) certificates
- ⊙ Matters related to issuance of a *Mother and Child Health Handbook*
- ⊙ Sales of one-month ticket, coupon tickets and one-day ticket for the Taito City Circular Route Bus, Megurin

Searching for a Hospital?

◇ **Phone**

You can search for a hospital through Himawari—the Tokyo Metropolitan Health & Medical Information Center.

Languages: English, Chinese, Korean, Thai and Spanish

Hours: 9 a.m. to 8 p.m. **Tel:** 03-5285-8181

◇ **Online**

You can search for a hospital through the Medical Information Net (NABII).

(Available in English, Chinese and Korean.)
<https://www.iryu.teikyouseido.mhlw.go.jp>



You can also access the website by scanning this code.

Some Service Counters Have Extended Hours on Wednesdays

Extended hours: Until 7 p.m.

Available service counters:

Taito City Office (4-5-6 Higashi-Ueno, Taito-ku)

1F: ⊙ Family Registration Residents' Service Section

2F: ⊙ Nursing Care Insurance Section

⊙ Senior Citizens' Welfare Section

⊙ Handicapped Welfare Section

⊙ National Health Insurance Section

3F: ⊙ National Pension Subsection, Residents' Affairs Section

⊙ Collection Section ⊙ Tax Administration Section

6F: ⊙ Child-Rearing & Youth Support Section

⊙ After-School Affairs Subsection ⊙ Child Care Section

Residents' Offices

⊙ Seibu (West) Residents' Office (3-1-30 Shitaya, Taito-ku)

⊙ Nambu (South) Residents' Office (1-10-12 Kotobuki, Taito-ku)

⊙ Hokubu (North) Residents' Office (4-48-1 Asakusa, Taito-ku)

Taito City Night & Holiday Children's Clinic

Medical treatment is available for children fifteen years of age or younger for sudden illnesses that can be handled without hospitalization.

Location: Inside Eiju General Hospital, 2-23-16 Higashi-Ueno, Taito-ku

Note: Please come to the emergency reception desk on the first floor.

Tel: 03-3833-8381

Note: Since you may be directed to a specialized medical facility, please be sure to call in advance.

Hours:

- Monday through Saturday (except on national holidays and during the yearend/New Year's holidays): 6:45 to 9:45 p.m. (treatment from 7 to 10 p.m.)
- Sundays, national holidays, *Obon* holidays (August 14-16), and during the year-end/New Year's holidays (December 29 to January 3): 8:45 a.m. to 9:45 p.m. (treatment from 9 a.m. to 10 p.m.)



You can also access the website by scanning this code.

Consultation about Life in Japan

► **Foreign Residents' Consultation Center**

If you have any problems or concerns, please feel free to consult the Foreign Residents' Consultation Center. You can talk to a consultant directly on the following days.

Language	Days	Hours
Chinese	First, second and third Thursdays	10 a.m. to noon
English	First and third Thursdays	10 a.m. to noon
Korean	First and third Thursdays	2 to 4 p.m.

Location: Residents' Consultation Office (Taito City Office 1F)

Inquiries: Residents' Consultation Office, Residents' Counseling Section

Tel: 03-5246-1025

Follow the Rules When Using Parks!

- 1 Do not litter 
- 2 Ball sports are only permitted in the sports corner 
- 3 Do not let your pets run freely, and always clean up after your pet 
- 4 Do not feed pigeons, cats and other stray/wild animals 
- 5 Do not make loud noises or talk loudly in the morning and at night 
- 6 Fireworks, barbecues and other activities that require fire are not permitted 
- 7 Smoking is prohibited in the children's playground and other areas where children gather 

Inquiries: Park Section,
Tel: 03-5246-1321

Come Take Part in Neighborhood Association Activities!

Neighborhood associations are resident organizations that promote exchanges among the people of the community and work together to create safe and comfortable neighborhoods. Neighborhood associations are always happy to welcome new participants.

Here are some neighborhood association activities.

Purpose	Activity
Help each other in times of need	Earthquakes, heavy rains and other disasters are becoming more frequent in Japan. It is vital to maintain relationships with your neighbors so that every resident, Japanese and foreign, can help each other in times of trouble.
Disaster preparation drills	Some neighborhood associations conduct disaster preparation drills (for earthquakes, typhoons, etc.) such as safe evacuation training. Practice together with the people near you!
Preparations for disasters	Some neighborhood associations have prepared water, food and toilets that can be used even if the water supply is cut, and other disaster preparation measures.
Child safety	Neighborhood association members stand on the street to check for safety to ensure that children can commute to and from school safely every day.
Neighborhood safety (crime prevention patrols)	Neighborhood association members patrol the town to check for safety and prevent accidents and crimes. If there is an accident, everyone is notified.
Cleaning	Community cleanup, recycling, collection of resources, etc.
Festivals and other events	There are many events such as the Bon-odori, festivals, portable shrine parades, New Year's mochi-making, and field days.

Anyone is welcome to join, so just ask a neighbor for more information. You can also consult with the city office.

Inquiries: Residents' Affairs Section, Tel: 03-5246-1122

Higher Vocational Training Promotion Loan Program for Single-Parent Households: Residential Support Funds

This program offers interest-free loans for rent money to single parents who want to find a job or switch jobs to increase their earnings.

Note: Individuals who find a job or switch to a job that pays more than their old one within one year of receiving the loan, work in said workplace continuously for one year, and complete a prescribed procedure will be exempt from repaying the loan.

Residential Support Funds:

Maximum loan amount: 40,000 yen per month

Maximum loan period: Twelve months

This program can be used in conjunction with other programs (Housing Support Benefits, etc.)

Eligibility:

- (1) Individuals receiving child support allowances
- (2) Individuals who have received program creation support

from the Child-Rearing & Youth Support Section of the city office

- (3) Individuals in one of the four situations noted below:
 1. Currently unemployed and looking to find work
 2. Looking to switch to a job with a higher salary
 3. Looking to obtain a higher salary from his/her current workplace (working longer hours, receiving compensation for gaining qualifications, etc.)
 4. Looking to switch to a job that leads to more stable employment (e.g., switching from day labor to a permanent position, etc.)

There are other conditions that must be met. Please call the number below for more information.

Inquiries:

Daily Life Support Desk, Taito City Council of Social Welfare
Tel: 03-5828-7547

Come Visit the Libraries!

There are books that will help you learn the Japanese language and about Japanese culture.

The library has a collection of books written in English, Chinese and Korean. You can also borrow books about Japan or Japanese-language learning materials.

Additionally, the Central Library distributes free pamphlets written in English, Chinese and Korean, such as pamphlets about Japanese-language classes, disaster prevention maps (for earthquakes), etc.

Visit whenever you like!

How to Use the Library

You need a library card to borrow items

You'll need a library card to borrow and reserve books, CDs and DVDs. You can get a card if you live, work or go to school in Taito City or live in one of the special wards of Tokyo (the twenty-three special cities in Tokyo).

Please come to the library counter with some personal identification that can verify your address (residence card, health insurance card, etc.). If you are working or going to school in Taito City, you will also need to bring a document that confirms your employment or student status.



To search for books



Central Library Asakusabashi Branch (International Section)

Number of items and period you can borrow:

	Number of items	Lending period
Books and magazines	Up to fifteen	Two weeks
CDs	Up to three	Two weeks
DVDs and videos	Up to two	One week

For more information, please visit the library website or read the *Handbook for Foreign Residents: Everyday Living in Taito City*.

Inquiries:

Central Library, Tel: 03-5246-5911

Monday to Saturday 9 a.m. to 8 p.m.

Sundays and national holidays 9 a.m. to 5 p.m.

(Except for the year-end/New Year's holidays, the third Thursday of each month, and special maintenance periods)

Libraries that have foreign-language books

Library	Address	Phone no.
Central Library	3-25-16 Nishi-Asakusa (Lifelong Learning Center 1F, 2F)	03-5246-5911
Central Library Asakusabashi Branch	2-8-7 Asakusabashi (Asakusabashi City Residents' Hall 2F, 3F)	03-3863-0082
Central Library Yanaka Branch	5-6-5 Yanaka (Yanaka Disaster Prevention Community Center 3F)	03-3824-4041
Negishi Library	5-18-13 Negishi (Tokyo Metropolitan Housing Negishi 5-chome Apartment 2F)	03-3876-2101
Ishihama Library	1-35-16 Hashiba 3F, 4F	03-3876-0854

Afterschool Children's Classrooms

Afterschool children's classrooms allow elementary school students to stay at school after class to study, play sports, etc. All students at schools that implement this program are eligible to participate.

The fifteen elementary schools at right conduct this program in the 2024 academic year.

[Time]

End of classes to 4:45 p.m.; 8 a.m. to 4:45 p.m. during long school vacations such as summer vacations (schedule may differ at some schools).

[Use]

Students must register in advance to use this program. Afterschool children's classrooms accept applications at any time.

[Fees]

You must pay an insurance fee of 800 yen when applying. For more information, please contact the afterschool children's classroom at your child's elementary school.

[Inquiries]

After-School Affairs Subsection, Child Care Section, Tel.: 03-5246-1235

[Elementary schools that implement the program and their contact numbers]

Afterschool Children's Classroom	Phone
Ueno Elementary School Afterschool Children's Classroom	070-5266-8803
Heisei Elementary School Afterschool Children's Classroom	090-6012-0085
Negishi Elementary School Afterschool Children's Classroom	080-5192-7024
Tosen Elementary School Afterschool Children's Classroom	090-9219-3357
Shinobugaoka Elementary School Afterschool Children's Classroom	080-9748-3447
Yanaka Elementary School Afterschool Children's Classroom	080-7241-1945
Kuromon Elementary School Afterschool Children's Classroom	080-5435-9762
Taisho Elementary School Afterschool Children's Classroom	080-5435-9784
Asakusa Elementary School Afterschool Children's Classroom	090-1910-5358
Kuramae Elementary School Afterschool Children's Classroom	090-3926-5292
Higashi-Asakusa Elementary School Afterschool Children's Classroom	080-7087-1460
Matsuba Elementary School Afterschool Children's Classroom	080-5192-6884
Senzoku Elementary School Afterschool Children's Classroom	080-3529-0033
Ishihama Elementary School Afterschool Children's Classroom	070-5045-8035
Kinryu Elementary School Afterschool Children's Classroom	080-4859-2646