



# TAITO CITY LIFE NEWS

2016.9 Vol. 4

Published by:

Residents' Support Section, Residents' Support Division, Taito City Office, 4-5-6 Higashi-Ueno, Taito-ku 110-8615, Tel: 03-5246-1126

[http://www.city.taito.lg.jp/index/kurashi/foreigner/life\\_news.html](http://www.city.taito.lg.jp/index/kurashi/foreigner/life_news.html)

## Medical Certificates for Medical Subsidies for Children Program (Infant-Toddler Medical Certificate/Children's Medical Certificate) Being Renewed

Current medical certificates are valid through September 30, and the new medical certificates—which are light green in color—will be mailed by that date. If you already have one of these medical certificates, you do not need to apply for a new one. If you do not receive your certificate by October, please call the number below.

**Note:** If you do not have a medical certificate, please come to the City Office to apply for one.

**Inquiries:** Benefits Subsection, Child-Rearing & Youth Support Section  
**Tel:** 03-5246-1232



○ 医 療 証	
負担者番号	8 8 1 3 ○ ○ ○ ○
受給者番号	○ ○ ○ ○ ○ ○ ○ ○
乳幼児 氏名	台東 花子
性別	男・女
生年月日	平成 28年 1月 1日生
住 所	〒110-8615 台東区東上野4-5-6
保護者 氏名	台東 太郎
有効期間	平成 28年 10月 1日から 平成 29年 9月 30日まで
上記の者は、東京都台東区乳幼児医療費の助成に開する条例により医療費の一部を台東区が助成するものであることを証明する。 東京都台東区長	
服部 征夫	
交付年月日	平成 28年 10月 1日



### Service Counters Open on Second Sundays for Partial Services

- Hours:** 9 a.m. to 5 p.m.
- Location:** Taito City Office 1F
- Available services:**
  - Matters related to family registry notifications
  - Matters related to residence records, personal seal registration certificates and family registry certificates
  - Matters related to notification of moving in/out, personal seal registration, and National Health Insurance enrollment
  - Payments for taxes or health insurance premiums and matters related to motorcycle registration
  - Matters related to childrearing allowances and medical subsidies
  - Consultation on tax payments and health insurance premiums

### Some Service Counters Have Extended Hours on Wednesdays

- Extended hours:** Until 7 p.m.
- Available service counters:**
  - Taito City Office** (4-5-6 Higashi-Ueno, Taito-ku)
    - 1F: ○ Family Registration Residents' Service Section
    - 2F: ○ National Health Insurance Section
      - Handicapped Welfare Section
      - Nursing Care Insurance Section
      - Senior Citizens' Welfare Section
    - 3F: ○ Tax Administration Section ○ Collection Section ○ National Pension Subsection, Residents' Support Section
    - 6F: ○ Child Care Section ○ Child-Rearing & Youth Support Section
  - Residents' Offices**
    - Seibu (West) Residents' Office (3-1-30 Shitaya, Taito-ku)
    - Nambu (South) Residents' Office (1-10-12 Kotobuki, Taito-ku)
    - Hokubu (North) Residents' Office (4-48-1 Asakusa, Taito-ku)

## Traditional culture experience programs for foreign visitors

CULTURE



TOKYO

The Asakusa Culture Tourist Information Center offers programs that allow foreign residents to experience authentic traditional Japanese culture and arts casually and in a short period of time.

**Location:** Asakusa Culture Tourist Information Center (2-18-9 Kaminarimon, Taito-ku)

No fees are charged and no reservations are required (apply at the first floor reception on the day of the event; first-come, first-served basis).

### 1. Japanese Classical Dance Workshop

**Program:** Practice traditional Japanese dancing while wearing a *kimono*, and watch traditional Japanese dancing performed by professionals

**Date and time:** Periodically, on a year-round basis  
Sundays from 11:30 a.m., 1:30 p.m. and 3:30 p.m.  
(Except September 18 and December 11, 2016, and January 1, 8, February 12, 26, and March 12, 2017.)

**Note:** Each session is one hour long.

### (2) Shamisen of Nagauta Workshop

**Program:** Listen to a *nagauta* (Traditional Japanese song) and *shamisen* performance by professionals, and try playing a *shamisen*.

**Date and time:** December 10 and 11, 2016; January 7 and 8, February 11 and 12, and March 11 and 12, 2017  
From 11:45 a.m., 1 p.m., 2:15 p.m. and 3:30 p.m.

**Note:** Each session is forty minutes long.

**Organized by:** Arts Council Tokyo (Tokyo Metropolitan Foundation for History and Culture)

**Supported by and in cooperation with:** Tokyo Metropolitan Government

**Inquiries:** Tokyo Tradition Office, Arts Council Tokyo, **Tel:** 03-5369-4541

Asakusa Culture Tourist Information Center, **Tel:** 03-3842-5566



## Use the Taito City Loop Bus "Megurin"

The Taito City Loop Bus "Megurin" is a community bus that runs through Taito City.

There are four routes: the Kita-Megurin (north), Minami-Megurin (south), Tozai-Megurin (east-west) and Gururi-Megurin (loop).

#### ◆ Operation intervals

• The Kita-Megurin (north), Minami-Megurin (south) and Tozai-Megurin (east-west) buses run at fifteen-minute intervals, while the Gururi-Megurin loop bus runs at twenty-minute intervals.

#### ◆ Bus fares

• ¥100 (for children and adults)

#### Notes:

1. Up to two preschool children with one accompanying adult can ride free of charge.
2. Silver passes and other discount fares are not applicable on these buses.
3. You can use transportation IC cards such as Pasma and Suica.

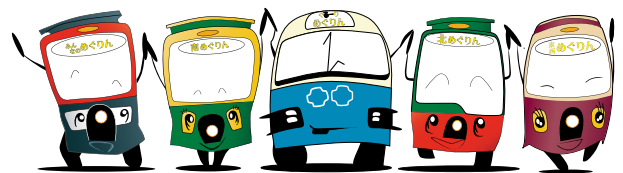
#### ◆ Bus transfers

- You can transfer to designated bus lines at transfer points (Shogaigakushu Center-Kita, Taito-kuyakusho, Uenogakuen, Asakusa-eki, Ueno-eki-Ueno-koen).
- Transfer fares are free of charge. You can only transfer once per ride, on the same day.

#### ▼ For more information on maps and schedules

Visit, <http://www.city.taito.lg.jp/index/kurashi/kotsu/megurin/index.html>

**Inquiries:** Traffic Affairs Section, **Tel:** 03-5246-1361



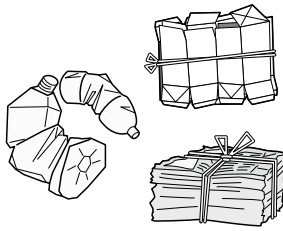
# Follow the Garbage Disposal Rules!

## ► How to Dispose of Your Garbage

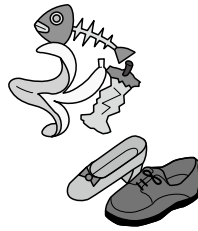
1. Separate your garbage into recyclable items, burnable garbage, unburnable garbage and large-size garbage
2. Take your garbage out on the proper collection day, depending on the type of garbage
3. Take your garbage to the designated location according to where you live ⇒ door-to-door collection per building

**Note:** Contact the Waste Collection Office to receive a garbage collection calendar.

### Examples of Garbage Categories



Recyclable items



Burnable garbage



Unburnable garbage



Picked up on a reservation basis

## ► Fees

As a rule, recyclable items, burnable garbage and unburnable garbage from households are collected free of charge. However, if you dispose of four or more 45-liter bags of garbage at one time, you will be charged a fee for the fourth bag and any additional bags.

## ► Large-sized Garbage (from households only)

Oversized garbage is collected on a reservation basis, and fees are charged for pickup. You can make a reservation for this with the Large-size Waste Reception Center. Please make your reservation by telephone or via the Internet.

● Large-size Waste Reception Center

**Tel:** 03-5296-7000 (Monday through Saturday, 8 a.m. to 7 p.m.)

**URL:** <http://sodai.tokyokankyo.or.jp/>



Purchase Large-sized Garbage Disposal Tickets and attach them to your items before disposal.

## ► Companies and Shops (business-related garbage)

Companies and shops are charged fees for the collection of garbage. If you have a company or shop, please contact a waste-handling company and/or a recyclable items collection company for your garbage (please visit the Taito City website for more information). If the amount is small, you can purchase Taito City Business-Related Garbage Disposal Tickets, attach them to your bags, and dispose of them on the same day set for household garbage collection.

(Roughly up to three 45-liter garbage bags.)



Taito City Business-Related Garbage Disposal Tickets

## Let's Cut Down on Kitchen Scraps

Reducing the amount of garbage makes it is easier to dispose of. Dispose of kitchen scraps as burnable garbage. Here are some hints:

**1. Do not buy too many groceries at once**  
Buy only what you will be able to eat

**2. Do not cut off too much**  
Reduce the amount of food scraps and other waste you throw away

**3. Do not wet the peels**  
Wash vegetables after peeling them

**4. Do not create a lot of leftovers**  
Do not make too much food

**5. Drain kitchen scraps**  
Draining kitchen scraps before disposal reduces the smell

**Inquiries:** Taito City Waste Collection Office, **Tel:** 03-3876-5771  
Waste & Recycle Section, **Tel:** 03-5246-1018

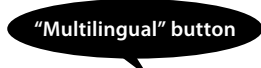
## Taito City's Website Is Viewable in Various Languages

The Taito City website can be viewed in eighty-nine languages.

**Languages:** English, Chinese (simplified and traditional characters), Korean, French, Indonesian, Malay, Thai, etc.

### ► Procedure

1. Click the "Multilingual" button on the upper right side of the website



2. Choose a language

**Note:** Since the translation is automated, the text may not be entirely accurate in some cases.

**Inquiries:** Public Relations Section, **Tel:** 03-5246-1021

## Search for a Hospital/Clinic

You can search for a hospital by phone or via the Internet in several foreign languages. They will tell you the location, telephone number, hours and medical departments of the hospital.

### ◇ Telephone

**Languages:** English, Chinese, Korean, Thai and Spanish

**Hours:** 9 a.m. to 8 p.m.

**Tel:** 03-5285-8181

### ◇ Internet (Japanese and English)

**URL:** <http://www.himawari.metro.tokyo.jp/qq/qq13enmnl.asp>



## Consultation Offered in Foreign Languages

### ► Consultations for Foreign Residents

If you have any problems or concerns, please feel free to consult the Foreign Residents' Advisory Center.

Language	Days	Hours
Chinese	First, second and third Thursdays	10 to 11:30 a.m.
English	First and third Thursdays	10 to 11:30 a.m.
Korean	First and third Thursdays	2 to 3:30 p.m.

**Location:** Residents' Advisory Office (Taito City Office 1F)

### ► Tablet-Based Interpretation Service

While you are at the City Office for your consultation, please feel free to use our interpretation service, which is delivered via a tablet device.

**Languages:** English, Chinese, Korean, Spanish and Portuguese

**Hours:** 8:30 a.m. to 5:15 p.m. (Wednesdays, 8:30 a.m. to 7 p.m.)

Second Sunday of the month, 9 a.m. to 5 p.m.

**Location:** Residents' Advisory Office (Taito City Office 1F)

**Inquiries:** Residents' Advisory Office, Residents' Counseling Section,

**Tel:** 03-5246-1025



## Concerning Disaster Prevention in Taito City

We never know when or where a disaster such as an earthquake will strike. Daily preparedness and learning the proper actions to take are essential to keep damage to a minimum when a disaster strikes.

### Be prepared

Keep at least a three-days supply of food and drinking water per person on hand for disasters and other emergencies.

#### Examples of emergency stock

- Drinking water (three liters per person per day)
- Preserved foods (canned foods, instant rice, foods in pouches, etc.)
- Can opener
- Makeshift toilet
- Toilet paper
- Wet wipes
- Garbage bags
- Gas cassette stoves
- Gas cassettes
- Flashlights
- Lighter
- Portable radio
- Batteries
- Gloves
- Emergency supplies (bandages, disinfectant, household medicine, etc.)



## Enrolling Your Child in a Municipal Kindergarten or Licensed *Kodomoen* (Short-Time Childcare)

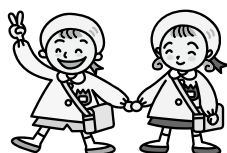
Children are recruited for the new school year in mid-November every year. If there are vacancies, however, applications are accepted at any time. For more information, please call the number below.

**Note:** For information on licensed *kodomoen* providing full-day childcare, please read the article "Information About Using Nursery Schools" on the following page.

### Inquiries:

Kindergartens: Educational Affairs Subsection, School Affairs Section, **Tel:** 03-5246-1412

Licensed *kodomoen*: Kodomoen Subsection, School Affairs Section, **Tel:** 03-5246-1414



## About the Taito City Consumer Life Center

### Ask for advice in these situations!

- If you have problems or suspicions when finalizing a contract or making a purchase
- If you are sent a bill for something you have no recollection of purchasing
- If an accident occurs when using a product

### Who can use this service?

Anyone who lives, works or goes to school in Taito City

### Consultation days and hours

Monday through Friday, 9 a.m. to 4 p.m. (closed on national holidays and during the yearend/New Year's holidays)

### Consultation procedures

Call or come to the Taito City Consumer Life Center

**Tel:** 03-5246-1133

**Location:** Taito City Office 9F, Service Counter No. 7

### Consultation is free of charge. All matters are kept strictly confidential.

**Inquiries:** Residents' Counseling Section

**Tel:** 03-5246-1144

## Enrolling Your Child in a Municipal Elementary or Junior High School

If your child has foreign nationality, has completed resident registration in Taito City, and you want to enroll him/her in a municipal elementary or junior high school, please come to the School Affairs Section of the Taito City Office (6F, Service Counter No. 2). Please be sure to bring your residence card and your child's card as well.

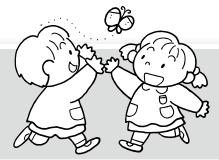
### Caution

1. If your child is a registered resident of Taito City and is already attending a municipal elementary school, you do not need to complete procedures for admission to a municipal junior high school.
2. If your child is attending an elementary school other than a Taito City municipal school and you want to enroll him/her in a municipal junior high school as a first-year student, please bring your residence card and your child's card as well as a certificate verifying the prospect of your child graduating from elementary school.

**Inquiries:** Educational Affairs Subsection, School Affairs Section, **Tel:** 03-5246-1412

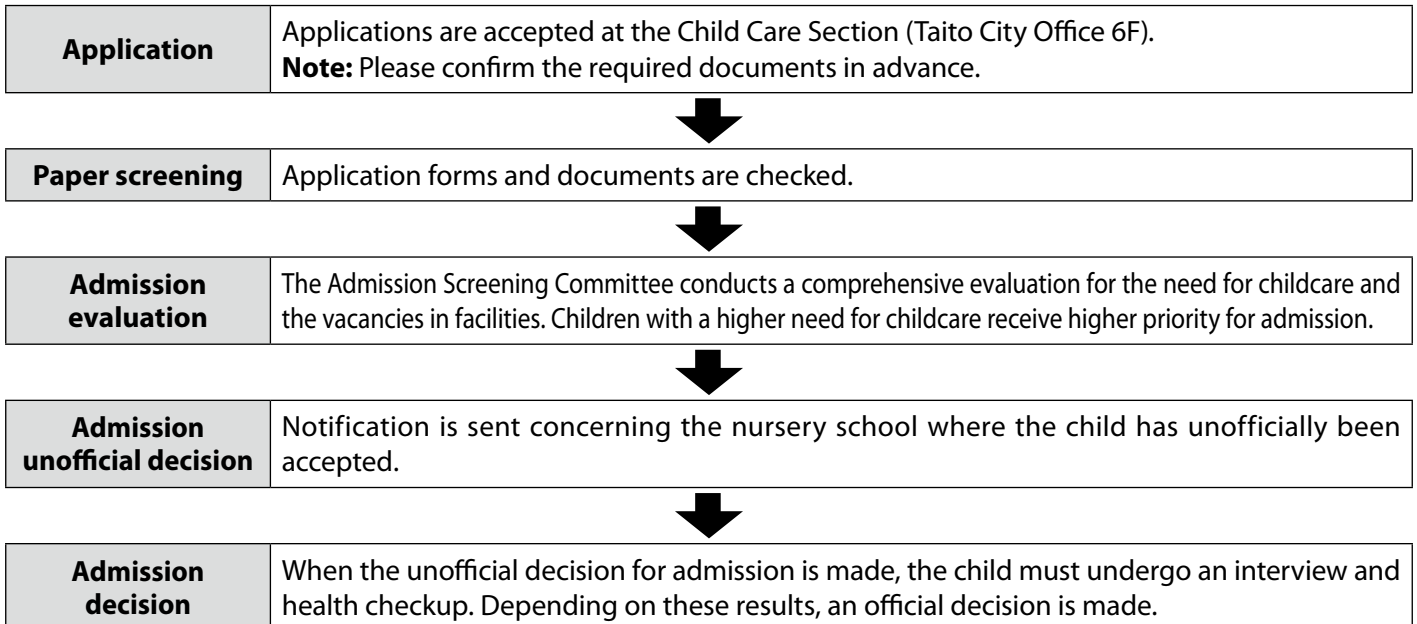


## Information About Using Nursery Schools



Nursery schools are facilities that offer childcare during the day for families that are not able to look after their child due to work or illness. There are thirty-nine licensed *kodomoen* (including full-day childcare *kodomoen*) in Taito City. Although application for admission is accepted on an as-needed basis, the deadline varies depending on the month you wish your child to be admitted. Please call for more information.

### ★ Nursery school admission procedures ★

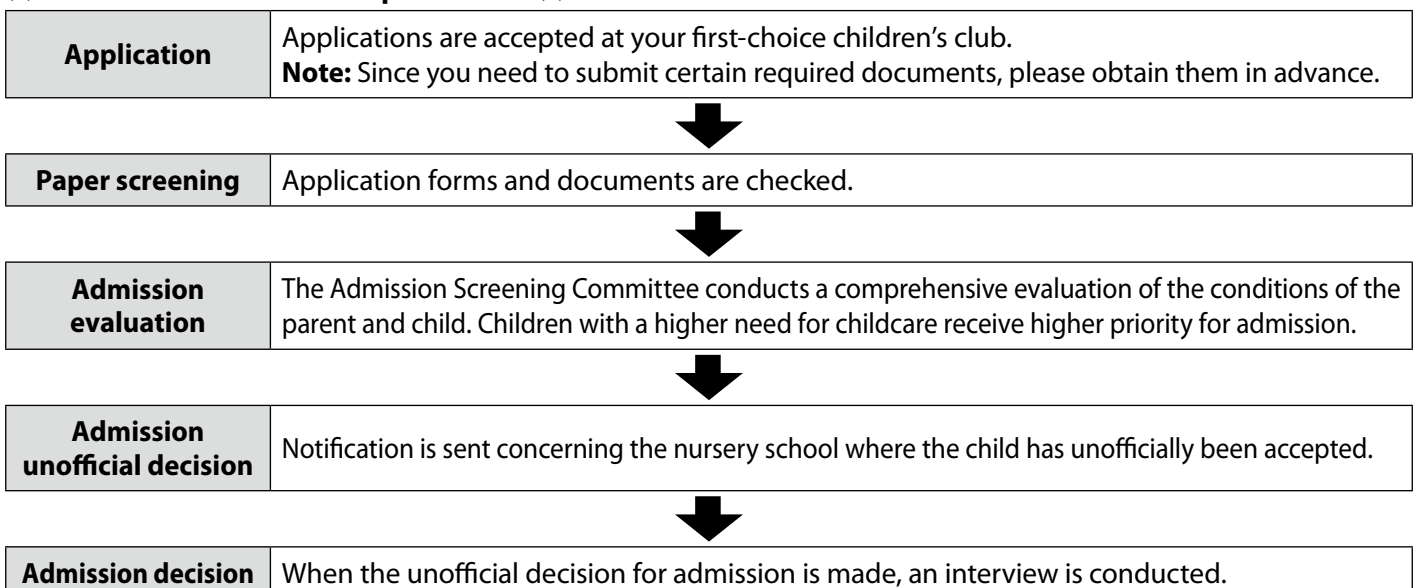


**Inquiries:** Childcare Consultation Subsection, Child Care Section, **Tel:** 03-5246-1234

## About Children's Club Admission

Children's clubs are for elementary schoolchildren who live in Taito City and whose parents are unable to look after them after school. Although applications for admission are accepted on an ongoing basis, the deadline varies depending on the date you wish your child to be admitted. Please call for more information.

### ★ Children's club admission procedures ★



**Inquiries:** After-School Affairs Subsection, Child Care Section, **Tel:** 03-5246-1235