



TAITO CITY LIFE NEWS

2016.1 Vol. 2

Published by:

Friendship Exchange Section, Citizens' Division, Taito City, 4-5-6 Higashi-Ueno, Taito-ku 110-8615, Tel: 03-5246-1016

http://www.city.taito.lg.jp/index/kurashi/foreigner/life_news.html

We Support Families with Children



We Subsidize Medical Expenses for Children and Their Parents

Service	Eligibility	Program
Medical Subsidies for Children	Children up to and including those in the third year of junior high school	Medical treatment covered by health insurance will become completely free of charge.
Medical Subsidies for Single-Parent Households	Single parents and their children until the first March 31 after the children reach eighteen years of age	Medical treatment covered by health insurance will become partially or completely free of charge.

Allowances Available for Those Raising Children Up to and Including the Third Year of Junior High School

Type of allowance	Eligibility
Child Allowance	Those with children up to and including the third year of junior high school
Childrearing Allowance	Childcare Allowance Households raising a child without a father or mother, or households in which the father or mother is disabled, until the first March 31 after the child reaches eighteen years of age
	Disability Allowance Those raising a child under twenty years of age with mid-level or higher physical or mental disability
Child Support Allowance	Households raising a child without a father or mother, or households in which the father or mother is disabled, until the first March 31 after the child reaches eighteen years of age (or up to twenty years of age if the child has a mid-level disability or higher)
Special Child Support Allowance	Those raising a child under twenty years of age with a physical or mental disability

You must complete applications at the City Office to receive these subsidies. Please call the City Office for more information.



Inquiries: Child Rearing Support Section,
Tel: 03-5246-1232

We Collect Recyclable Resources

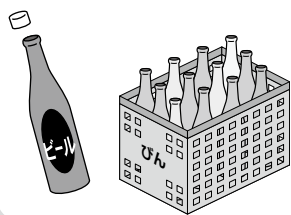
Items you no longer use can be recycled if you sort them according to type upon disposal. Since these items are picked up at collection sites* and municipal facilities, your cooperation in their collection would be appreciated. Please ask the City Office for more information, such as collection hours and locations.

*Collection sites: This refers to garbage collection sites shared by the people in the community.

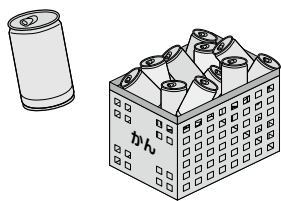
Items Collected at Collection Sites

Note: There is a fee for items collected from business establishments.

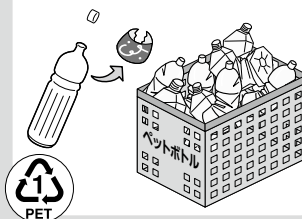
Glass bottles



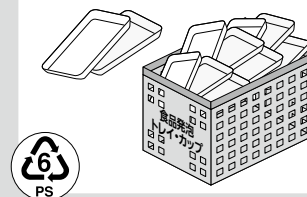
Cans



Plastic PET bottles



Foam food containers and cups



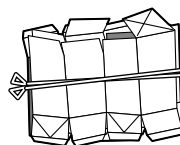
Newspapers



Cardboard



Milk and juice cartons



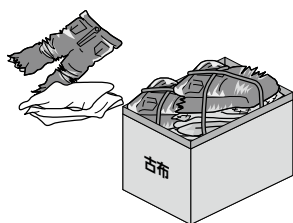
Magazines and fliers



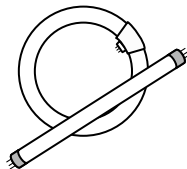
Items Collected at City Facilities and Shops

Note: Items from business establishments are not collected.

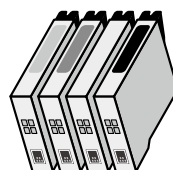
Used clothes



Fluorescent light bulbs



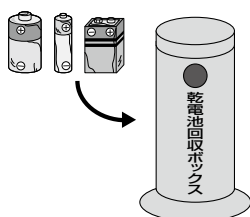
Ink cartridges



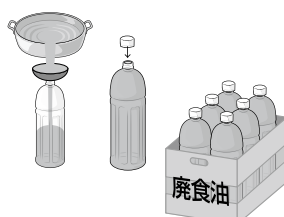
Please place used ink cartridges in the designated collection boxes.

- Brother Industries, Ltd.
- Canon Inc.
- Dell Inc.
- Seiko Epson Corporation
- Hewlett-Packard Japan Ltd.
- Lexmark International Inc.

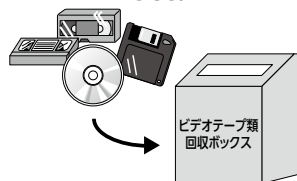
Batteries



Used cooking oil



Videotapes, CDs, etc.



Small household appliances



Borrow Books and More from the Library

In addition to books and magazines, you can borrow CDs and DVDs from Taito City's libraries. Please take advantage of this service.

	Address	Tel
Chuo Library	3-25-16 Nishi-Asakusa, Taito-ku	03-5246-5911
Asakusabashi Annex	2F & 3F, 2-8-7 Asakusabashi, Taito-ku	03-3863-0082
Yanaka Annex	3F, 5-6-5 Yanaka, Taito-ku	03-3824-4041
Negishi Library	2F, 5-18-13 Negishi, Taito-ku	03-3876-2101
Ishihama Library	1-35-16 Hashiba, Taito-ku	03-3876-0854

We Support Your Child's Development

Please use Matsugaya Welfare Hall's consultation services if you have any concerns about your child's development or any problems concerning childrearing. Specialized staff are ready to offer advice on an individual basis.

For example:

- Your child is late in starting to walk
- Your child's vocabulary is not developing
- Your child is restless
- Your child has frequent temper tantrums
- Your child does not seem to like group activities at preschool

These consultation services are free of charge, and all matters will be kept strictly confidential. Please call beforehand for advice over the phone.

Inquiries: Child Welfare Office, Matsugaya Welfare Hall, **Tel:** 03-3842-2673

Taito City Office Business Hours and Holidays

Taito City Office is also open on the third Sunday of every month.

Hours: 9 a.m. to 5 p.m.

Location: First floor

Services: Family register
Residence records
Health insurance
Payment of tax and health insurance premiums
Child allowances and more

A service counter is also open for extended hours until 7 p.m. every Wednesday. Please call the City Office for more information.

Inquiries: Planning Section

Tel: 03-5246-1012

Please Come to the Disaster Prevention Fair

Taito City will hold a disaster prevention fair where you can learn about disasters such as earthquakes and experience simulated earthquake tremors. Anyone is welcome to join.

Date: March 12 (Sat.) and March 13 (Sun.), 2016

Time: 12 (Sat.), 10 a.m. to 4 p.m.

13 (Sun.), 10 a.m. to 3 p.m.

Location: Lifelong Learning Center 1F (3-25-16 Nishi-Asakusa, Taito-ku)



Inquiries: Disasters Prevention Section

Tel: 03-5246-1094

Please Register Your Dog

If you own a dog, please observe the following rules. Any violation may be punishable by a fine.

- Register your dog (once for each dog)
- Have your dog receive rabies vaccinations (once a year)
- Attach dog tags to your dog with the certification of registration and vaccination

You can register and vaccinate your dog at veterinary hospitals in Taito City, and receive dog tags as well.

Dog Owners—Common Courtesy

- When you walk your dog, be sure to keep it on a leash
- Take your dog's waste home for disposal, and if your pet urinates in a public location, please be sure to rinse with water
- Make sure your dog's waste or urine does not cause problems for other people. If you train your dog properly, they will be able to do it at home.

Inquiries: Taito Public Health Center (Living & Life Hygiene Section), **Tel:** 03-3847-9437 (in Japanese only)

Beware of Stomach Flu

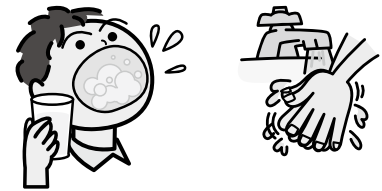
Winter is the time of year when stomach flu such as those caused by norovirus are prevalent and can easily infect you. The virus easily spreads at schools, nursery schools and between family members, so please take steps to prevent infections.

Infection route:

People become infected when they eat food contaminated with the virus, or when viruses on their hands enter their mouth.

Symptoms: Stomachache, diarrhea, vomiting, fever

Prevention: Wash your hands carefully before cooking and eating, and after using the toilet. Washing your hands with soap and water twice is even more effective.



Inquiries: Taito Public Health Center (Public Health & Disease Prevention Section), **Tel:** 03-3847-9476

Learn the Rules and Customs of Living in Japan!

Avoid making loud noises

The noise you make can travel through the walls in apartment and condominium buildings to your next-door neighbor's rooms, so please refrain from talking loudly or playing loud music. Be especially careful at night, since this can easily cause problems among neighbors.



Join the town association

In Japan, all towns have local associations of community residents. These associations conduct interactive activities for residents, such as circulating bulletins and putting on disaster prevention drills and festivals. Since anyone can join these associations, please ask your neighbors about them or inquire at the City Office for information.

Inquiries: Residents Support Section
Tel: 03-5246-1122