

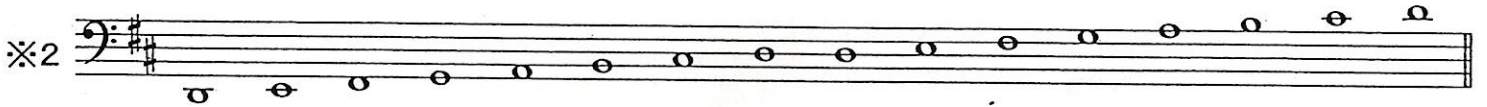
ヴィオラ

ト音記号を使った音階

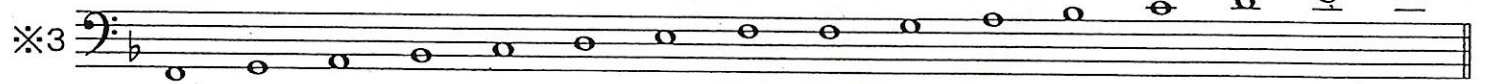


チェロ

二長調の音階



ヘ長調の音階



コントラバス

変ロ長調の音階



ハ長調の音階



フルート

ト長調の音階 ♩=60

※5

Exercise 5: Flute, C major scale (ト長調の音階), quarter notes, tempo 60. The scale is written on a treble clef staff with a key signature of one sharp (F#). It consists of two phrases, each starting with a slur over the first four notes. The first phrase is C4-D4-E4-F#4-G4-A4-B4, and the second phrase is G4-A4-B4-A4-G4-F#4-E4-D4-C4.

半音階 ♩=80

ゆっくり

※6

Exercise 6: Flute, chromatic scale (半音階), quarter notes, tempo 80, slow (ゆっくり). The scale is written on a treble clef staff with a key signature of one sharp (F#). It consists of two phrases, each starting with a slur over the first four notes. The first phrase is C4-C#4-D4-D#4-E4-E#4-F#4, and the second phrase is G#4-A#4-B4-A#4-G#4-F#4-E4-D4-C4.

Continuation of Exercise 6: Flute, chromatic scale (半音階), quarter notes, tempo 80, slow (ゆっくり). The scale is written on a treble clef staff with a key signature of one flat (Bb). It consists of two phrases, each starting with a slur over the first four notes. The first phrase is Bb4-Ab4-Gb4-Fb4-Eb4, and the second phrase is D4-C4-Bb4-Ab4-Gb4-Fb4-Eb4-D4.

オーボエ

ハ長調の音階

※7

Exercise 7: Oboe, C major scale (ハ長調の音階), quarter notes. The scale is written on a treble clef staff with a key signature of no sharps or flats. It consists of two phrases, each starting with a slur over the first four notes. The first phrase is C4-D4-E4-F4-G4-A4-B4, and the second phrase is B4-A4-G4-F4-E4-D4-C4.

クラリネット

ハ長調の音階 in B

※8

Exercise 8: Clarinet, C major scale (ハ長調の音階) in B, quarter notes. The scale is written on a treble clef staff with a key signature of no sharps or flats. It consists of two phrases, each starting with a slur over the first four notes. The first phrase is C4-D4-E4-F4-G4-A4-B4, and the second phrase is B4-A4-G4-F4-E4-D4-C4.

半音階

Continuation of Exercise 8: Clarinet, chromatic scale (半音階), quarter notes. The scale is written on a treble clef staff with a key signature of one sharp (F#). It consists of two phrases, each starting with a slur over the first four notes. The first phrase is C4-C#4-D4-D#4-E4-E#4-F#4, and the second phrase is G#4-A#4-B4-A#4-G#4-F#4-E4-D4-C4.

ファゴット

ハ長調の音階

※9

Exercise 9: Bassoon, C major scale (ハ長調の音階), quarter notes. The scale is written on a bass clef staff with a key signature of no sharps or flats. It consists of two phrases, each starting with a slur over the first four notes. The first phrase is C3-D3-E3-F3-G3-A3-B3, and the second phrase is B3-A3-G3-F3-E3-D3-C3.


トランペット

※10 ハ長調の音階 in B

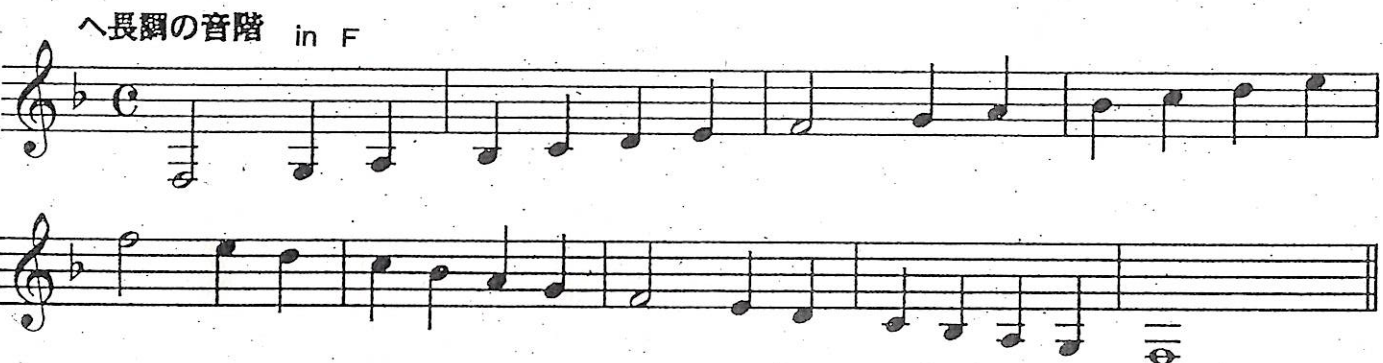


ホルン

※11 ハ長調の音階 in F

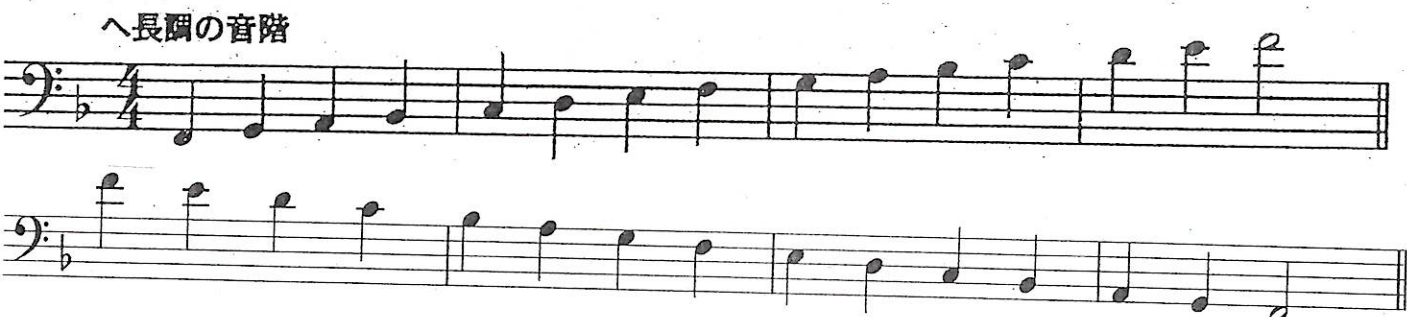


※12 ヘ長調の音階 in F



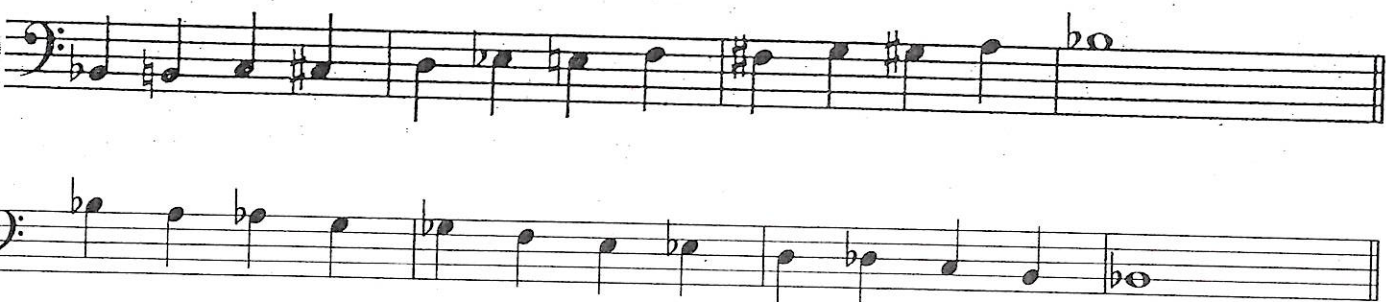
トロンボーン

※13 ヘ長調の音階



半音階

※14



チューバ

※15 変口長調の音階 J=60

