

1 ★ Finger Puppets Shokichi [Finger puppets] Map A

The shop conducts finger puppet shows for customers (a collection of short skits with 11 patterns, about 30 minutes). 2 people or more, 700 yen per person. Caricatures drawn by finger puppets are also popular (1000 yen).



Viewing:

- Reservation required
- Making the heads and hands of finger puppets - Coloring - Sewing kimono

Address	3-2-6, Yanaka, Taito City	☎ 03-3821-1837	DATA
Opening Hours	10:00 a.m. to 6:00 p.m.		
Closed	Mondays and Tuesdays (open on national holidays, occasionally closed)		
Access	2 minute by walk from Sendagi Station, Chiyoda Line, Tokyo Metro		
Website	http://shokichi.main.jp/		
Advance Reservations	Nothing in particular (groups of 10 or more people are requested to come early)		

2 ★ RETURN [Classroom & Atelier] Map A

A handicraft studio by Mie Kuba, who is born and brought up in Yanaka, Taito Ward. The studio is located in a Japanese-style house facing the new landmark of Yanaka (Kitte Dori Avenue), with Majima Inari Jinja shrine worshipped in a back alley that still retains the Edo atmosphere.

In the past, a river called Aizome flowed where the present-day Hebi Michi street is located, and the area used to be called Aizomecho, as Aizome, or indigo dyeing, flourished here. The owner has created a "training studio" befitting the artistic and traditional town, that conducts classes for dyeing, from traditional indigo dyeing to easy tie-and-dye, as well as for Box Shamisen.

The studio was named "RETURN" with a wish to go back to the good old town.

Hands-on Experience:

- Reservation required - Weekdays 1:00 p.m./Saturday and, Sundays and Holidays 11:00 a.m. ~
- Up to 3 people per session, 3 groups per day - Making dyed tie-dye T-shirts
- About 120 minutes - 3,000 yen (including material cost) - You can take home an original T-shirt

Address	2-2-10, Yanaka, Taito City	✉ durgamie1125@icloud.com	DATA
Opening Hours	Weekdays 1:00 p.m. ~ / Saturday and, Sundays and Holidays 11:00 a.m. ~ Sunset		
Closed	Occasionally closed		
Access	5 minutes by walk from Nezu Station, Chiyoda Line, Tokyo Metro		
Website			

3 Manekineko Yanakado [Manekineko] Map A

We make our original Manekineko, or 'beckoning cats'. Each cat has a different happy face, whether it is a "Good fortune beckoning cat" or a "Money luck beckoning cat kept in the west corner of the house".

Hands-on Experience:

- Reservation required up to 13 people
- Hands-on experience of painting a Manekineko (figure of a cat with one paw raised) During business hours (reservations from 10:30)
- Medium 2,200 yen (tax included), Large 2,750 yen (tax included)
- * Both include tea and snacks
- * The session is conducted at the adjacent Cafe Necoemon. (Monthly holiday)

Address	5-4-3, Yanaka, Taito City	☎ 03-3822-2297	DATA
Opening Hours	10:30 a.m. to 5:30 p.m.		
Closed	Mondays (new year holidays)		
Access	7 minutes by walk from JR Nippori Station, 6 minutes by walk from Sendagi Station, Chiyoda Line, Tokyo Metro		
Website	http://www.yanakado.com/		
Advance Reservations	Up to 10 days in advance (small groups can be accommodated anytime depending seat availability)		

4 ★ Edo Sashimono Kimura [Wood Joinery] Map B

Edo Sashimono is one of Japan's world-renowned traditional arts. Using traditional techniques such as hozo (tenon joints) and kumite (box joints), and without using a single metal nail, we manufacture sturdy and beautiful furniture and artefacts that include chest of drawers made of paulownia wood, and ornamental shelves, writing desks, jewelry boxes, and full-length mirrors made mainly of mulberry wood. We are committed to making products that our customers will love and appreciate. We also offer hands-on training to students (junior high school students and older) on school trips. Please feel free to contact us. (Kindly contact us in advance for seasonal events.)

Viewing:- Reservation required - from 3 people

Hands-on Experience:

- Reservation required (from 3 people)
- Make mulberry chopsticks (You can take home a pair of mulberry chopsticks from Mikurashima, one of the 7 islands of Izu that are becoming scarce) About 120 minutes 3,500 yen
- 3 or more people can register For school trips, please send a fax from your N6school.

Address	3-1-1, Shitaya, Taito City	☎ 03-3874-7926	DATA
Opening Hours	9:00 a.m. to 5:00 p.m.		
Closed	Festivals		
Access	2 minutes by walk from Iriya Station, Hibiya Line, Tokyo Metro		
Advance Reservations	Up to 2 months in advance		

5 Edokoro Allan West [Japanese painting production] Map A

Japanese painting studio/gallery of artist Allan West, where works with prices displayed can be purchased directly.



Viewing:

- Reservation required Up to 20 people
- Viewing of Japanese paintings of artist Allan West

Address	1-6-17, Yanaka, Taito City	☎ 03-3827-1907	DATA
Opening Hours	1:30 p.m. to 4:30 p.m.		
Closed	Thursdays and Sundays (check the website for temporary closing)		
Access	5 minutes' walk from Exit 1, Nezu Station, Chiyoda Line, Tokyo Metro		
Website	http://www.allanwest.jp		
Advance Reservations	Up to the day before, if possible		

6 Ham Sausage Shop TAKE-ZO [Meat production] Map B

A tiny shop selling handmade ham sausages. All sausages are made with minimal use of additives, and there are various types such as plain sausages, herb-infused sausages and sausages shaped like a terrine. You can get a view of the inside of the factory through the glass from the shop front even without making a reservation. If you make a reservation, you can come inside for a tour of the factory.



Viewing:

- Reservation required
- Up to 5 people
- Explanation of manufacturing machines, etc.

Address	1-32-5, Ryusen, Taito City	☎ 03-3873-4186	DATA
Opening Hours	11:00 a.m. to 6:00 p.m.		
Closed	Sundays and festivals		
Access	Take Metropolitan bus (To 08) and get off at Shitaya Police Station, 1 minute by walk		
Website	https://www.take-zo.net		
Advance Reservations	Up to 7 days in advance		

7 ★ Teuchi Udon Ieyasu [Udon noodle production, sales and restaurant] Map B

Handmade udon noodles are traditional Japanese food that tastes like no other. Be sure to try the authentic-style noodles.



Viewing:

- Reservation not required
- Up to 15 people

Hands-on Experience:

- Reservation required Up to 15 people (main shop only)
- Three types of experience (kneading, spreading and eating) (Please inquire at the time of reservation for details.)
- 2:00 p.m. to 5:00 p.m. (outside of business hours)
- * Please bring your own apron and bandanna.
- Inquiries from schools must be made by teachers.
- Hands-on experience is offered only at the main shop (not at the Asakusa branch).

Address	1-23-2, Iriya, Taito City	☎ 03-3874-8789	DATA
Opening Hours	11:30 a.m. to 2:00 p.m. / 6:00 p.m. to 7:30 p.m.		
Closed	Wednesday and Saturday nights and holidays		
Access	2 minutes' walk from Iriya Station, Hibiya Line, Tokyo Metro (Ryusen-side exit)		
Advance Reservations	Up to 1 week in advance		

8 ★ Season's Flower (Shop and School) [Flowers and Arrangement] Map B

We would like to share the joy of flowers with you. Making flower wreaths and arrangements for all seasons by hands is such a great pleasure. We offer you more classes, for example, for making Christmas wreaths and the traditional Japanese decoration for the New Year, "Shimekazari". We do flower arrangements for shops, or you can make your own or make one as a gift!

Hands-on Experience:

- Reservation required Up to 6 people
- Create wreaths and arrangements with fresh and dried flowers
- About 120 minutes 1,500 yen ~ (Material cost not included)
- * Sessions are conducted from Wednesday to Friday 11:00 a.m. to 5:00 p.m. (Timing can be discussed).
- Tools will be provided.
- * We can send the tools if you want after the session.

Address	4-28-8, Matsugaya, Taito City	☎ 03-3843-1787	DATA
Opening Hours	11am-6pm unless otherwise stated		
Closed	irregularly		
Access	3 mins from Iriya station (Hibiya Line)		
Website	http://www.seasons-flower.net		
Advance Reservations	Up to 5days in advance		

9 Bag Shop PARTNER [Purse and bag] Map B

As a local bag shop, Bag Shop PARTNER strives to offer highly personalized services to respond to our customers' demand for a "one-stop shop for bags." Be sure to visit the shop if you're looking for a bag or purse. You will certainly find something you like! We are waiting for you with a selection of quality handmade bags and purses. We also offer repair and processing services and accept orders for custom-made bags. Feel free to inquire if you have any request, such as attaching a shoulder strap to a tote bag.



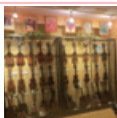
Viewing:

- Reservation required Number of participants is flexible
- You can see how the bags are made and the tools and materials used to make the bags
- * We manufacture and sell original totes and shoulder bags made mainly of cowhide. We also accept orders, please feel free to contact us. We also undertake repairs.

Address	4-26-13, Matsugaya, Taito City	☎ 090-4603-4968	DATA
Opening Hours	10:00 a.m. to 5:30 p.m.		
Closed	Sundays, Mondays and Thursdays		
Access	7 minutes by walk from Iriya Station, Hibiya Line, Tokyo Metro		
Website	https://www.crema.jp/creator/1721743/item/onsale	http://kabanpartner.thebase.in/	
Advance Reservations	Up to 2 weeks in advance		

10 KIWAYA Shokai (KIWAYA Ukulele Museum "RAKU") [Ukulele sales and hands-on experience] Map E

With the Japanese ukulele brand "Famous" that has been around for over half a century, we offer you "a lifestyle enriched with ukulele music". The Ukulele Museum "Raku" is housed in our company building, where vintage ukuleles are on permanent display and events are held. Kindly book in advance for a tour.



Hands-on Experience:

- Reservation required
- Ukulele
- Weekly Saturdays 11:30 a.m. to 12:20 p.m.
- Free Ukulele rental available

Address	In Kiwaya Shokai, 1-7-3, Matsugaya, Taito City	☎ 03-5828-4661	DATA
Opening Hours	11:00 a.m. to 5:30 p.m.		
Closed	Mondays, Saturdays and Holidays		
Access	8 minutes by walk from Inaricho Station, Ginza Line, Tokyo Metro		
Website	http://www.kiwaya.com		

11 ★ Wanariya [Indigo dyeing / weaving studio] Map B

A studio for hands-on experiences of indigo dyeing and weaving in Senzoku, Taito City, near the Senso-ji temple and Kappabashi shopping area. Wanariya offers a great time for visitors of all ages, including those from overseas. We also welcome students on school trips from all parts of the country. We look forward to welcoming you. (Services may be offered in English.)



Viewing: - Reservation not required - Up to 45 people

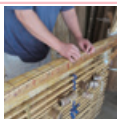
Hands-on Experience:

- Reservation required Up to 45 people * Same-day reservation accepted
- Handcraft workshop (coasters, place mats, etc.) 4,200 yen ~ (tax included)
- Indigo dyeing workshop (T shirts, tote bags, handkerchiefs, hand towels, etc.) 2,500 yen ~ (tax included) About 60 to 90 minutes (varies by content)

Address	Kurosawa Bldg., 1F, 1-8-10, Senzoku, Taito City	☎ 03-5603-9169	DATA
Opening Hours	10:00 a.m. to 6:00 p.m.		
Closed	Irregularly		
Access	8 minutes' walk from Iriya Station, Hibiya Line, Tokyo Metro		
Website	www.wanariya.co.jp		
Advance Reservations	Same-day reservation accepted		

12 ★ Tanaka Seirenjo [Edo style blinds and screens] Map B,C

Over 100 years, since the early Meiji period, our family has been in the business of creating Edo style "Sudare" blinds and screens. School trips, excursions and foreign residents are welcome. Feel free to ask us.



Viewing:

- Booking required up to 15 people
- "Edo style [Sudare] blinds-making process" (Depending on work being done)
- *Further discussion needed

Hands-on Experience:

- Reservation required Up to 15 people
- Making bamboo screen luncheon mats using traditional techniques
- * Consultation required
- About 120 minutes 5,000 yen

Address	1-18-6, Senzoku, Taito City	☎ 03-3873-4653	DATA
Opening Hours	9am-5pm		
Closed	Closed irregularly		
Access	7 mins from Iriya station (Hibiya Line)		
Website	http://www.handicrafts.co.jp/		
Advance Reservations	Up to 10days in advance		

13 ★ Ito Inbo [Seal engraving] Map B,C

Thanks to our customers, our yuin (seals on which words or symbols are engraved) made of natural wood (tea, camellia, cherry, maple, prickly ash, etc.) have become well known. Our workshops are popular among both adults and students (including those on school trips). Please inquire. We also make normal seals by hand.



Hands-on Experience:

- Reservation required Up to 10 people
- Engraving original pictures and characters on natural wood (You can take your work home with you.)
- About 120 minutes
- 3,000 yen
- * Please bring an apron or other dispensable clothes.

Address	1-19-4, Senzoku, Taito City	☎ 03-3873-0489	DATA
Opening Hours	8:30 a.m. to 6:30 p.m.		
Closed	Irregularly		
Access	20 minutes' walk from Exit 3, Iriya Station, Hibiya Line, Tokyo Metro		
Website	http://www.ito-inbo.com		
Advance Reservations	Up to about 1 month in advance (10 days for general customers)		

14 ★ Edo Sashimono Watanabe [Wood Joinery] Map B,C

We are the third generation of Edo Sashimonoshi, or specialized furniture joiners, who are located next to the Higuchi Ichiyo Memorial Museum. We try to make use of the beauty of the wood grain to create furniture with classic, as well as modern designs. Please feel free to drop by.



Viewing:

- Reservation required
- Up to 6 people

Hands-on Experience:

- Reservation required Up to 6 people
- Making chopsticks and small boxes
- About 120 to 180 minutes 2,000 yen ~ * Please wear pants, etc.

Address	3-25-4, Ryusen, Taito City	☎ 03-3873-3050	DATA
Opening Hours	10:00 a.m. to 6:00 p.m.		
Closed	Occasionally closed		
Access	7 minutes by walk from Minowa Station, Hibiya Line, Tokyo Metro		
Website	http://w-sashimono.jp		
Advance Reservations	Up to 2 weeks in advance		

15 ★ Asakusa Ojima Edo-Kiriko Shop [Glass, Edo-Kiriko] Map C

A rough draft of the design is made on the glass and then the glass is engraved. Make your own glass that is one-of-its-kind in the entire world. Elementary and junior high school students on a school trip can also safely work on glass. (From 2 to 40 people)



Hands-on Experience:

- Reservation required Up to 40 people
- Carving a pattern on a glass (Edo-kiriko)
- About 60 minutes
- Elementary and junior high schools 2,700 yen (Tax included), General 4,500 yen (tax included)

Address	4-49-7 Asakusa, Taito City	☎ 03-4285-9664	DATA
Opening Hours	9:00 a.m. to 5:00 p.m.		
Hours	[Shop] open through the year. [Workshop] closed irregularly		
Access	7 mins from Asakusa station (Ginza Line), 8 mins from Asakusa station (Tsukuba Express)		
Website	http://edokiriko.jp/		
Advance Reservations	Up to 1week in advance		

16 Takeda Seika [Ladies'/men's shoes] Map C

* Viewing may not be possible due to the use status of members or when there is an event in the Share Factory.



Viewing:

- Reservation required Up to 15 people
- Viewing of work of member shoemakers and other creators of the Share Factory Asakusa
- About 15 minutes
- Free (works of members may be purchased.)

Address	5-41-1, Asakusa, Taito City	☎ 03-3875-1001	DATA
Opening Hours	10:00 a.m. to 4:00 p.m.		
Closed	Saturdays, Sundays and holidays		
Access	10 minutes' walk from Asakusa Station, Tokyo Metro Ginza Line/Toei Asakusa Line/Tobu Sky Tree Line/TX		
Website	www.magical.co.jp		
Advance Reservations	Up to 5 business days in advance		

17 Kimekomi Doll Shop Tanabe [Wood and cloth Dolls] Map F

We sell materials for dolls, called Kimekomi Dolls, made with a traditional technique. The shop has a large selection of fabrics, such as gold brocade and crepe to dress the dolls. In about 90 minutes, you can experience making a doll, which involves dressing a Mari, a small Kimekomi Doll, with cloth. Of course, after making the doll, you can take it home with you.



Hands-on Experience:

- Reservation not required
 - Making a small Kimekomi Doll, mari
- Monday to Saturday 11:00 a.m. to 4:00 p.m.
About 90 minutes

Address Akku Building 7F, 1-18-10, Asakusabashi, Taito City ☎ 03-3862-4701
Opening Hours 10:00 a.m. to 6:00 p.m.
Closed Sundays and festivals
Access 30 seconds walk from Asakusabashi Station on JR Sobu Line and Toei Asakusa Line
Website <https://kimekomi.co.jp>

DATA

18 Qrinaf/Bandy's Leather craft School [Manufacture and sales of leather products] Map C

We follow the concept "make only as many goods as you can with one piece of leather, and be done for the day once they are sold out" and produce leather goods in small quantities as only a small studio can. We also have classes specializing in machine tailoring, which is rare for leather craft. We help people make salable bags while having fun.



Hands-on Experience:

- Reservation required (Apply from the Website)
 - Experience making a leather purse with a leather sewing machine
- About 180 minutes
* Please inquire for details.

Address 6-26-8, Asakusa, Taito City ☎ 03-6319-0146
Opening Hours 10:00 a.m. to 5:00 p.m. (Classroom: Wednesday, Thursday, Saturday)
Closed Tuesdays
Access 10 minutes by walk from Tokyo Metro Ginza Line, Toei Asakusa Line, Tobu Skytree Line, Asakusa Station, Tokyo Metro
Website <http://www.qrinaf.com>
Advance Reservations Up to 7 days in advance

DATA

19 Kokusai Kougei Co., Ltd. [Foil stamping] Map C

We print gold and silver on plastic, leather, and wood. Foil stamping on plastic has become a rare sight today, as it is now done in only a few places in Tokyo. Do visit us once to see how the printing is done. Feel free to get in touch with us.

Viewing:

- Reservation required
 - Up to 3 people (1 group per day)
 - Foil stamping on plastic and wood, etc.
- Monday to Friday

Address Sekine Building 1F, 6-45-6, Asakusa, Taito City ☎ 03-3876-4510
Opening Hours 8:30 a.m. to 6:00 p.m.
Closed Saturdays and Sundays
Access 12 minutes by walk from Asakusa Station, Ginza Line, Tokyo Metro
Website <http://kokusaikougei.com>
Advance Reservations Up to 7 days in advance

DATA

20 ★ RENDO SHOE & REPAIR [Shoe making and sales] Map C

We focus mainly on bespoke designed men's shoes and promote our original brand. We hope you enjoy our shoe-making process and get the feel of what is happening in our industry in Asakusa, a most popular place for tourists.



Viewing:

- Booking required
"The whole process of shoe making (Designing a pattern for shoes)"
10am-5pm from Monday to Friday

Address 7-5-5 Asakusa, Taito City ☎ 03-6802-3825
Opening Hours 1:00 p.m. to 7:00 p.m. Saturday and, Sundays and Holidays 12:00 p.m. to 6:00 p.m.
Closed Tuesdays and Wednesdays
Access 15 mins walk from Asakusa station (Ginza Line, Toei Asakusa Line and Tobu Skytree Line)
Website <http://www.rendo-shoes.jp/>
Advance Reservations Up to 1 week in advance

DATA

21 PEARL SEIWA [Pearl Accessories] Map D

Come and join our workshop and make your own original necklace with our finest collection of pearls! We have many designs to choose from. You can nicely wear them in a casual or a formal occasion.



Hands-on Experience:

- Booking required up to 5 people
"Pearl Necklace Making"
Duration: 30 mins to 60 mins approx
Costs: 5,000 yen ~
*Available only on weekdays

Address 1F, THE GATE UENO, 1-12-2 Higashiueno, Taito City ☎ 03-5812-5510
Opening Hours 10:00 a.m. to 6:00 p.m.
Closed Open daily except New Year holidays
Access 5 mins from Okachimachi station (JR Line), 3 mins from Nakaokachimachi station (Hibiya Line)
Website <http://www.pearl-seiwa.jp>
Advance Reservations Up to 2days in advance

DATA

22 ★ atelier & Shop IMAIZUMI [Metal stamping factory] Map F

This is a studio where you can have an authentic production experience.

In this workshop, you will make a necklace called "Kenkafuda", a talisman necklace. It is said that "Kenkafuda" is a talisman that is worn by the portable shrine bearers around their necks, and is said to be a good luck charm to protect them from misfortune.



▲ Website

Hands-on Experience:

- Reservation required
 - Stainless steel accessory making (various types)
- 1,000 yen ~
* Reservations may not be accepted during the busy season.
* Visit our website for details.

Address 3-9-8, Motoasakusa, Taito City (Imaizumi Co.) ☎ 080-3486-8411 (direct line)
Opening Hours 9:00 a.m. to 5:30 p.m. (hands-on experience: 10:00 a.m. to 5:00 p.m.)
Access 7 minutes' walk from Exit A4, Shin-Okachimachi Station, Toei Oedo Line/TX
10 minutes' walk from Inaricho Station/Tawaramachi Station, Ginza Line, Tokyo Metro
Website Instagram:@imazm_10123 / X:@kkimaizumi

DATA

23 Miyakawa Brush Factory [Handmade brushes] Map D

Please see the handmade brushes made by Tokyo traditional craftsmen/Taito City excellent craftsmen. We've manufactured various types of brushes not only for clothes, shoes, body and hair but also for industrial use, home use, industrial art and cosmetics. We have long experience and knowledge, so please contact us about anything regarding brushes.



Viewing:

- No booking required
"The manufacturing process will be explained."
*Up to 10 persons. Suitable for children aged 15 or older (high school and above).

Address 2-10-14 Motoasakusa, Taito City ☎ 03-3844-5025
Opening Hours 9:30 a.m. to 5:00 p.m.
Closed Sundays, national holidays and Saturdays irregularly
Access 2 mins from Inaricho station (Ginza Line)
Website <http://edo-hake-brush.com/>
Advance Reservations Up to 10days in advance

DATA

24 Nagao Printmakers [Edo woodblock print] Map D,F

We have many framed ukiyo-e and nishiki-e pictures on display in the store. An ukiyo-e picture requires collaborative work by a painter, a carver, and a printer, of which, carving and printing processes can be observed in our store at one time.



Viewing:

- Reservation required
 - Up to 5 people
 - Carving and printing processes
- (Content depends on the work of the day)

Address 1-1-1, Motoasakusa, Taito City ☎ 03-3847-0772
Opening Hours 10:30 a.m. to 6:00 p.m.
Closed Occasionally closed
Access 4 minutes by walk from Shin-Okachimachi Station on the Toei Oedo Line/TX
Advance Reservations Up to 1 months in advance

DATA

25 Miyuki [Rough stone polishing/jewelry] Map D

We deal in various color stones, and distribute consistent goods ranging from rough stones to finished products to wholesalers, retailers, department stores, manufacturers and teleshopping throughout Japan. With our catchphrase "Ask Miyuki anything about rough stones," we enjoy a high reputation as a color stone specialist.

Viewing:

- Reservation required
- Up to 2 people
- Processing of a rough stone into a jewel (cutting, polishing, etc.)

Address 5-16-13, Ueno, Taito City ☎ 03-3836-4331
Opening Hours 10:00 a.m. to 5:45 p.m.
Closed Sundays and holidays
Access 3 minutes' walk from South Exit, Okachimachi Station, JR
Website <http://www.miyukigroup.com>
Advance Reservations Up to 10 days in advance

DATA

26 ★ PEACHBRAND [Manufacturing and sales of belt] Map D

This is a retail store that mainly sells fashion accessories made primarily of a traditional fabric called "narrow fabric". The store is popular for its customization service, where customers can choose their favorite combination of fabrics and metal fittings (belt materials), have the belts made in the store, and have them delivered or shipped immediately. You can enjoy making belts with us by seeing and touching the narrow fabric that combines "variety" and "originality".

We try to keep our prices as low as possible.



Viewing:

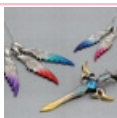
Workshops are held at the store every day.
You can enjoy choosing fabric of your liking!

Address 2k540 P-2 5-9, Ueno, Taito City ☎ 03-3833-3727
Opening Hours 11:00 a.m. to 7:00 p.m.
Closed Wednesday and occasionally closed
Access 4 minutes by walk from JR Okachimachi Station, 8 minutes walk from JR Akihabara Station, 4 minutes by walk from Suehirocho Station, Ginza Line, Tokyo Metro, 5 minutes by walk from Naka-Okachimachi Station, Hibiya Line, Tokyo Metro
Website <http://peach-brand.com/>

DATA

27 ★ Largestk [Men's Accessories] Map D

This is a factory and shop for silver accessories. As accessories are designed, made, and sold by the owner, customization and repairs are also possible. The unique designs and the technique are a must watch!



Hands-on Experience:

- Reservation required Up to 4 people
- Stone insertion for silver charms and natural stone bracelet making
- About 40 minutes
- 4,000 yen (tax included)

Address 2k540 P-3 5-9, Ueno, Taito City ☎ 03-5812-4141
Opening Hours 11:00 a.m. to 7:00 p.m.
Closed Wednesdays
Access 8 minutes by walk from the South Exit of JR Okachimachi Station
Website <http://www.largestk.com>
Advance Reservations Up to 3 days in advance

DATA

28 UAMOU [Original Character Creation] Map D

Displays and sells a collection of goods and artworks, mainly soft vinyl figures of UAMOU and Boo.



Viewing:

- Reservation not required

Address 2k540 N-5 5-9, Ueno, Taito City
Opening Hours 11:00 a.m. to 7:00 p.m.
Closed Wednesdays
Access 4 minutes by walk from JR Okachimachi Station
Website <http://www.uamou.com>

DATA

29 ★ Mataro Dolls Hall [Wood and Cloth Dolls] Map D

We are making and selling Japanese dolls certified as an authentic successor of wooden dolls. We handle wooden dolls popular as gifts or souvenirs for overseas such as Hina dolls and dolls for the Boys' Festival. We are looking forward to seeing you at our store with a variety of dolls ranging from the Heian period's to Noh, Kabuki and creative ones. Also, we have hands-on training classes for doll-making.



Hands-on Experience:

Booking required up to 20 people and only 5 groups of 20 people available per day
"Choose a magnet, strap and doll, and have a hands-on training of making a wooden doll."
Duration: 30 mins to 120 mins approx
Costs: From 2,000 yen to 7,000 yen

Address 5-15-13 Ueno, Taito City ☎ 03-3833-9662
Opening Hours 9:00 a.m. to 5:00 p.m.
Closed Weekends and National holidays
Access 1 mins from Nakaokachimachi station (Hibiya Line), 5 mins from Ueno-okachimachi Station (Toei Oedo Line)
Website <http://www.mataro.co.jp>
Advance Reservations Up to about 2days in advance

DATA

30 ★ Hiramoto Kobo [Gold and Silverworks] Map D

Many people from beginners to professionals come to our engraving classes to learn the techniques of the craftsmen. We make order-made jewelry and do repairs using traditional techniques. The hands-on experience includes a series of tasks from melting the silver, forming the shape of a ring, and finishing the ring with a file. We also offer hands-on learning to students on school trips. Please feel free to contact us.

Viewing:- Reservation required
Number of participants is flexible

Hands-on Experience:

- Reservation required Number of participants is flexible
- Making rings
- About 120 minutes Students 2,500 yen General 3,500 yen

Address 4-7-8, Taito, Taito City ☎ 03-3837-3889
Opening Hours 10:00 a.m. to 7:00 p.m. (Sundays and Festivals up to 6:00 p.m.)
Closed Open all year round
Access 5 minutes by walk from JR Okachimachi Station
Website <http://www.hiramotokoubou.com/>
Advance Reservations Regular session: Anytime, Up to 2 months before the session for school trip, junior high school students

DATA

31 ★ Ten Forest [Jewelry/accessories] Map D

We hold jewelry-making lessons, in addition to designing and making original jewelry, accepting custom-made orders, production from prototypes and wholesale distribution. Lessons are available for both individuals and groups.



Hands-on Experience:

- Reservation required Group lessons for 4 to 8 people
- (1) Sterling silver clay (plate pendant)
About 120 minutes
Students: 3,300 yen ~ (tax included) Adults: 4,400 yen ~ (tax included)
- (2) Silver line works (clip charm)
About 90 minutes.
Students: 2,750 yen ~ (tax included) Adults: 4,180 yen ~ (tax included)

Address Silver Bldg., 2F, 3-16-9, Taito, Taito City ☎ 03-3831-2307
Opening Hours 10:00 a.m. to 6:00 p.m.
Closed Sundays and holidays
Access * Content, date, price and time (9:00 a.m. -) are negotiable for groups (up to 8 people)
5 minutes' walk from South Exit, JR Okachimachi Station,
1 minute's walk from Naka-Okachimachi Station, Hibiya Line, Tokyo Metro
Website <http://www.tenforest.com/>
Advance Reservations Up to 2 weeks in advance

DATA

32 ★ Studio Sakami [Venetian glass-fusing, cloisonne ware, jewelry engraving, and making tonbo dama (glass beads)] Map D

The hands-on training of Venetian glass-fusing, cloisonne ware, jewelry engraving, and making tonbo dama (glass beads) are popular. Those who want to learn thoroughly should try this class!



Viewing:
Please contact us in advance.

Hands-on Experience:

- Reservation required From 1 to about 15 people
- * Up to 5 people for glass bead making/toreutics
- Glass fusing, cloisonne, toreutic accessories and glass bead making
About 120 min. (Works can be taken home.)
Monday to Friday 10:00 a.m. - noon, 1:00 p.m. to 3:00 p.m.
School trip/hands-on experience plan 2,200 yen ~ (tax included)
General customers 2,750 yen ~ (tax included)
* Please wear clothes that are easy to work in.

Address 1F Silver Bldg.3-16-9, Taito, Taito City ☎ 03-3837-3721
Opening Hours 9:00 a.m. to 5:30 p.m.
Closed Weekends and national holidays (Some weekends and holidays are exceptional. Please contact us for details.)
Access 5 mins from the South Exit of Okachimachi station (JR Line), 1 mins from Nakaokachimachi station (Hibiya Line)
Website <http://www.s-sakami.com/>
Advance Reservations Up to 1 month in advance for school trips, up to 1 week in advance for general customers

DATA

33 ★ Blooming (Workshop in Gallery shop) [Wooden toys and furniture] [Map D](#)

You can check our company's products and artists' original works.



Hands-on Experience:

Booking required up to 5 people and only four groups of 5 people available per day
"Making a cute wooden bear pendant!"

Duration: 30 mins approx Costs: From 1,650 yen ~ (tax included)

*Please contact us for more information on available dates for viewing and hands-on experience.

Address	1F, Blooming, 2-10-13 Taito, Taito City	☎ 03-6661-0122
Opening Hours	11:00 a.m. to 6:00 p.m.	
Closed	Closed irregularly	
Access	10 mins from Akihabara and Okachimachi station (JR Line)	
Website	http://www.blooming2007.com	
Advance Reservations	Up to 1 week in advance	

DATA

34 ★ Playacolors [Manufacture and sale of accessories] [Map F](#)

Playacolors, which means 'colors of the sea', breathes life into sea glass and seashells having a mysterious charm created by nature, as accessories. Through our accessories, we hope to convey the strength and splendor of nature that transforms fragments of glass, which were originally man-made, into round and wonderful sea glass. We hope that wearing our accessories can bring you the power of nature!



Hands-on Experience:

- Reservation required Up to 2 people (3 groups per day)

Refer to our Website for details as contents of the section changes depending on the season

Address	1-33-12-201, Taito, Taito City	☎ 080-5195-4911
Opening Hours	11:00 a.m. to 5:00 p.m.	
Closed	Refer to our Website for details	
Access	10 minutes by walk from JR Akihabara Station	
Website	http://playacolors.ocn.net/	
Advance Reservations	Up to 1 week in advance	

DATA

35 DELIFE Factory Store [Planning and manufacturing of leather products] [Map F](#)

We are a leather shop that sells wallets and bags, with a factory adjoining our shop.

In the shop, there is an "Order Stand" where you can customize the leather goods to your very own liking with leather color and metal fittings of your choice, and have your name engraved then and there.



Viewing:

- Reservation required
- You can observe the manufacturing process
- Tuesday
- 2 participants per session, up to 2 groups per day

Address	403, Toko Building, 1-14-14, Taito, Taito City	☎ 03-4361-5296
Opening Hours	1:00 p.m. to 6:00 p.m.	
Closed	Mondays	
Access	5 minutes by walk from JR Akihabara Station	
Website	https://www.delife.tokyo/	

DATA

36 ★ Tama Biyo Kagaku [Cosmetics manufacturer] [Map D,F](#)

You can add your original scent to shampoo handmade by professionals by getting counseling from a qualified aromatherapist. You can learn knowledge about shampoo and aromas while having fun, and take home the shampoo you made.



Hands-on Experience:

- Reservation required Up to 4 people

- Shampoo scenting

About 30 to 45 minutes

1,500 yen

- Hands-on experience of perfume blending (hair oil, etc.) is also available.

Address	2-18-14, Kojima, Taito City	☎ 03-3851-8707
Opening Hours	Monday: 11:00 a.m. to 8:00 p.m. / Wednesday - Saturday: 11:00 a.m. to 7:00 p.m.	
Closed	Tuesdays, Sundays and holidays	
Access	30 seconds' walk from Exit A4, Shin-Okachimachi Station, Toei Oedo Line/TX	
Website	http://www.tamabiyoukagaku.com	
Advance Reservations	Up to about 20 days in advance	

DATA

37 Kimoto Glass [Glassware] [Map D,F](#)

We are a shop specializing in glass tableware, which has been in business for last eighty years. You must visit our shop that showcases a wide variety of Edo Kiriko glasswork, a traditional craft of Tokyo dating back to the Edo period, as well as beautiful glassware created in collaboration with up-and-coming designers.



Viewing:

Booking required up to 5 people

"EDO KIRIKO (the traditional Japanese glass cutting), the whole process of glassware making, glass panels and samples"

Duration: 30 mins approx

Address	2-18-17 Kojima, Taito City	☎ 03-3851-9668
Opening Hours	10:00 a.m. to 5:00 p.m.	
Closed	Wednesdays, Weekends and National holidays	
Access	1 mins from Exit A4 Shinokachimachi station (Tsukuba Express, Oedo Line)	
Website	http://kimotoglass.tokyo	
Advance Reservations	Up to 10days in advance	

DATA

38 Wooden Tag Craftsman Houn's Store Fudaya.com [Wooden tag] [Map D,F](#)

Japanese-style chic gift! Wooden tags are greatly appreciated for celebrating milestones, as commemorative gifts, and as souvenirs to overseas. Please check out our original and chic wooden tags made of materials that only a specialty store can offer, for your "necklace, straps, wood bags, bags, and key cases". We can also suggest designs for events such as birth, store opening, relocation, anniversary, thanking someone, or celebrating longevity, or matching designs for friends.



Viewing:

- Reservation required Up to 5 people

We will explain the origin of the wooden tag in the production process, such as "extreme" hand-finishing by polishing, etc. If you make an appointment to visit the workshop, you will receive a free gift.

About 60 minutes

Address	1-31-4, Torigoe, Taito City	☎ 03-3851-5628
Opening Hours	Weekdays 11:00 a.m. to 5:30 p.m. Saturday, Sundays and Holidays business days 10:00 a.m. to 3:00 p.m.	
Closed	Updated as needed on our Website	
Access	5 minutes by walk from A2 Exit, Shin-Okachimachi Station on the Toei Oedo Line/TX	
Website	http://www.fudaya.com http://www.fudaya.jp	
Advance Reservations	Up to 2 ~ 3 weeks in advance	

DATA

39 Fujii Bags [Bags and Purses] [Map F](#)

We are dedicated to preserving the culture of Edo through the production of bags. Bags are made to order, such as cigarette cases made using traditional wooden molds, drawingstring bags on which owner's name can be printed, and hand bags made from hand towels.



Viewing:

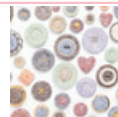
- Reservation required Up to 4 people (2 groups per day)
- You can see the process of making bags
- Saturday and Sunday

Address	1-17-5, Torigoe, Taito City	☎ 03-5820-3987
Opening Hours	9:00 a.m. to 7:00 p.m.	
Closed	Open all year round (However, closed during business trips)	
Access	12 minutes by walk from Asakusabashi Station, JR Sobu Line. 8 minutes by walk from Shin-Okachimachi Station, Toei Oedo Line/TX	
Website	http://www.saiiuya.com	
Advance Reservations	Up to 3 days in advance	

DATA

40 Kurumi Button Shop MiSuZuYa [Covered buttons] [Map F](#)

We manufacture and sell "Kurumi buttons", which are made by wrapping fabric or leather around metal fittings. We will suggest ways to use and enjoy Kurumi buttons so that they can become a part of your everyday life. Please feel free to talk to the craftsmen who make various articles or original buttons.



Hands-on Experience:

- Hands-on experience making Kurumi buttons, about 10 minutes, 500 yen

Address	1-6-6, Torigoe, Taito City	☎ 03-3864-1293
Opening Hours	1:00 p.m. to 6:00 p.m.	
Closed	Sunday and Monday	
Access	10 minutes by walk from Asakusabashi Station, JR Sobu Line. 10 minutes by walk from Shin-Okachimachi Station, Toei Oedo Line/TX	
Website	http://www.facebook.com/kurumimisuzuya	

DATA

41 Kakuwa Shibata Goki [Bags and Pouches] Map F

Our craftsmen, who have carried on the tradition since our inception in 1897, produce Edo-style bags with all their hearts. Touch and feel our products that are full of the Edo-period charm. We also make bags from your own hand towels or fabric.



Viewing:- Reservation required Up to 4 people (3 groups per day)
- Bag manufacturing work (Please note that some parts cannot be disclosed)
We can conduct a workshop
- During business hours (can be done after business hours)

Hands-on Experience:- Reservation required
- Up to 4 people (3 groups per day)

Address 1-10-6, Torigoe, Taito City ☎ 03-5830-7529
Opening Hours 10:30 a.m. to 7:00 p.m.
Closed Wednesdays, Saturdays and Holidays
Access 8 minutes by walk from A4 Exit, Shin-Okachimachi Station, Toei Oedo Line
Website <https://www.kakuwa-shibata.com>
Advance Reservations Up to 2 weeks in advance

DATA

42 Obelisk [Custom-made leather clothing, men's and ladies' apparel] Map F

Our clothes have been worn by many famous artists. Leather clothing made to fit perfectly for you will make you look really cool. We take pride in our custom-made clothing that makes your dreams come true. Get your only one!



Viewing:

- Reservation required Up to 10 people
(2 groups/day)
- Description of works displayed in the shop and their production process
2:00 p.m. to 4:00 p.m. on weekdays
Within 30 minutes

Address 1-6-3, Misuji, Taito City ☎ 03-5833-0737
Opening Hours Weekday: 10:00 a.m. to 7:00 p.m. / holiday: 2:00 p.m. to 7:00 p.m.
Closed Irregularly
Access 8 minutes' walk from Asakusabashi Station, JR Sobu Line/Shin-Okachimachi Station, Toei Oedo Line
Website <http://www.obelisk.jp>
Advance Reservations Up to 3 days in advance

DATA

43 ★ Nisshin Kikinzoku [Silverware] Map F

At our workshop, we offer hands-on classes in which contemporary master craftsman So-sho Kamikawa and his family of traditional craftsmen address your needs politely and attentively. Hands-on classes are offered to individuals, as well as groups.



Viewing:

- Reservation required
- Up to 5 people

Hands-on Experience:

- Reservation required Up to 5 people
- Choose from three types of content (Please inquire at the time of reservation for details.)
* Please wear clothes that are comfortable to work

Address Ito Building 1F, 1-3-13, Misuji, Taito City ☎ 03-5687-5585
Opening Hours 9:00 a.m. to 5:00 p.m.
Closed Occasionally closed
Access 7 minutes by walk from Kuramae station, Toei Asakusa Line
Website <http://www.nisshin-kikinzoku.com>
Advance Reservations Up to 1 week in advance

DATA

44 MAITO [Natural dyeing Knitwear, accessories and household goods] Map F

In our shop, you can purchase our original naturally dyed products. There is also a dyeing studio nearby, where we hold monthly workshops on natural dyeing.



Viewing:

- Reservation required Up to 5 people
- Planning of original products, plant dyeing and sewing
* Please inquire if you are sure of visiting

Hands-on Experience:

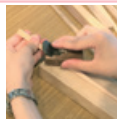
- Check our Website

Address Kuramae Building 1F, 4-20-12, Kuramae, Taito City ☎ 03-3863-1128
Opening Hours 11:30 a.m. to 6:30 p.m.
Closed (Kuramae Main Store) Mondays
Access 1 minute by walk from AO Exit, Kuramae station, Toei Asakusa Line
Website <https://maito-komuro.com>
Advance Reservations Reserve from our Website

DATA

45 ★ Mogami Kogei [Wood Joinery] Map F

Edo Sashimono is Japanese-style furniture made by assembling boards and rods without using a single metal nail, yet it is delicate and robust, and shows the aesthetic sense of Edo. While inheriting the traditional manufacturing methods, we have the flexibility to match the types of furniture to the living style of the times, and we manufacture furniture that gets well with western as well as Japanese-style rooms.



Viewing:

- Reservation required - Up to 6 people

Hands-on Experience:

- Reservation required Up to 6 people
- Making small boxes About 90 to 120 minutes 2,000 yen ~
* Please wear clothes that are comfortable to work. Up to 5 people can be accommodated

Address 4-37-10, Kuramae, Taito City ☎ 03-3851-6540
Opening Hours 9:00 a.m. to 5:00 p.m.
Closed Sundays and festivals
Access 5 minutes by walk from Kuramae station, Toei Oedo Line
Website <http://sasimono.ciao.jp/>
Advance Reservations Up to 1 week in advance

DATA

46 ★ Baisendokoro En-no-ki [Coffee bean roaster] Map F

The shop has a selection of green unroasted coffee beans. We will roast your beans to suit your taste after you place your order, so please enjoy this process.



Viewing:

- Reservation not required
- From selection of beans to roasting and packing

Hands-on Experience:

- Reservation not required
Up to three people at a time (up to ten groups per day)
- From selection of beans to roasting and packing
About 20 minutes
Please purchase the beans you processed.

Address 2-3-1, Kuramae, Taito City ☎ 050-3701-1178
Opening Hours Noon to 5:00 p.m.
Closed Sundays, Mondays, Wednesdays and holidays
Access 1 minute's walk from Exit A1, Kuramae Station, Toei Asakusa Line
Website <https://en-no-ki.com>
Advance Reservations Same-day reservation accepted

DATA

47 ★ dakota Kobo [Pottery] Map E

With the concept of "bringing playful spirit to everyday lives," we make somewhat mischievous and wicked works. We have workshops and hands-on experience classes where you can casually enjoy pottery. Craft teacher Akko holds craft-making classes for children every Wednesday!



Hands-on Experience:

- Reservation required Up to 17 people (3 groups/day)
- Vessel making/painting
About 90 to 120 minutes
Pottery: 3,500 yen ~ (tax excluded) / painting: 3,000 yen ~ (tax excluded)
* Please wear clothes you don't mind getting dirty.

Address 4-6-11 Kotobuki, Taito City ☎ 03-6318-9920
Opening Hours 10:00 a.m. to 5:00 p.m.
Closed Saturdays and Sundays (We do not have a regular schedule.)
Access 3 mins from Tawaramachi station (Ginza Line), 6 mins from Kuramae station (Oedo Line)
Website <http://www.dakota-kobo.com>
Advance Reservations Up to 4days in advance

DATA

48 ★ Glass Craft Sandblast Headquarters Classroom [Glass craft classroom] Map F

People of all ages, from about 9 years old, can have a hands-on craft experience casually. Even if you have no talent for painting or you are a beginner, you can make a wonderful glass craft in only 90 minutes and take it home right away. It is an ideal activity for couples, women's groups and families. Staff speak basic English.



Viewing:

- Reservation required 2 people (up to 4 groups/day)
- Explanation on processes in the shop

Hands-on Experience:

- Reservation required 10 people
- Hands-on experience of making glasses, plates, etc.
Weekday: 10:00 a.m. / 1:00 p.m. / 3:30 p.m. / 6:30 p.m. Saturday: 10:00 a.m. / 1:00 p.m. / 3:30 p.m.
Sunday/holiday: 1:00 p.m. / 3:30 p.m. 3,500 yen to 4,000 yen/person About 90 minutes
- Works can be taken home on the same day.

Address Izumina Bldg., 1F, 1-26-12, Asakusabashi, Taito City ☎ 03-3865-3946
Opening Hours 9:30 a.m. to 5:30 p.m.
Closed Irregularly
Access 1 minute's walk from West Exit, Asakusabashi Station, JR Sobu Line
A3 Exit, Asakusabashi Station, Toei Asakusa Line
Website http://bestglass.jp/?page_id=503

DATA

49 ★ Hashitou Honten [Sale of chopsticks] Map E

We are a store specializing in chopsticks that has been in business for over 100 years, and we aim to be a company that introduces Japanese food culture and hospitality to the world through chopsticks.

* For groups of 11 people or more, please contact us in advance (Contact person: Kaminaka).



Hands-on Experience:

- Reservation required Up to 10 people
- Making chopsticks using wood from Japan
- About 60 minutes
- 1,500 yen ~ 2,000 yen (tax included)

Address	2-6-2, Nishiasakusa, Taito City	☎ 03-3844-0723
Opening Hours	9:00 a.m. to 5:00 p.m.	
Closed	Sundays and festivals	
Access	5 minutes by walk from Tawaramachi Station, Ginza Line, Tokyo Metro	
Website	http://www.hashitou.co.jp	
Advance Reservations	Up to 1 month in advance of the event day	

DATA

50 ★ Asakusa Taiyaki Experience Workshop Guraku [Taiyaki and shaved ice] Map E

- Guraku is the only place where you can experience making Japanese traditional sweet Taiyaki! You can have an authentic experience using a commercial Taiyaki machine.
- A variety of ingredients can be used! In addition to the bean paste and cream, you can add kimchi cheese, and make savory Taiyaki like a hot dog.
- Since fire or knife is not used, even children and novice cooks can safely try making Taiyaki! People of all ages from children to adults can indulge in the experience!



- ### Hands-on Experience:-
- Reservation required * Reserve from our official website or over the telephone 3,850 yen for adults, 2,750 yen for elementary and high school students (tax included)
 - 16 participants per session, Up to 5 groups can be accommodated in a day
 - (1) Learn about the history of Taiyaki and how it is made (2) Cooking (each person will cook 6 numbers) (3) Food sampling

Address	2-3-2, Nishiasakusa, Taito City	☎ 03-6338-1809
Opening Hours	11:00 a.m. to 6:00 p.m.	
Closed	None (occasionally closed)	
Access	4 minutes by walk from Tawaramachi Station, Tsukuba Express Asakusa Station, Ginza Line, Tokyo Metro	
Website	https://guraku.jp	

DATA

51 ★ Ganso Food Sample Store Kappabashi [Food samples] Map E

There are a variety of unique and fun items made using food sample techniques. We also offer hands-on experience of making food samples using traditional wax.



Hands-on Experience:

- Make food samples using traditional wax (2 tempura / 1 lettuce)
- First grade elementary school and above *First and second grade elementary school students must be accompanied by an adult (paid). (Up to 2 children can accompany an adult)
- Up to 6 people per slot (reserve 2 slots for 7 to 16 people)
- (1) 11:00 a.m., (2) 11:30 a.m., (3) 2:00 p.m., (4) 2:30 p.m., (5) 3:00 p.m., (6) 3:30 p.m., (7) 4:00 p.m. and (8) 4:30 p.m. 2,500 yen (for one person/tax included)
- * 3,000 yen (tax included) from March 1, 2024.

Address	3-7-6, Nishiasakusa, Taito City	☎ 0120-17-1839
Opening Hours	10:00 a.m. to 5:30 p.m.	
Closed	No holidays (closed during new year holidays)	
Access	8 minutes by walk from Iriya Station, Hibiya Line, Tokyo Metro. 5 minutes by walk from Asakusa Station, TX	
Website	http://www.ganso-sample.com	
Advance Reservations	Up to 6 months in advance (on the same day if available)	

DATA

52 Hanato [Edo-style hand-painted paper lantern] Map E

A store specializing in Chochin, or Japanese paper lanterns, established in 1893. We sell hand-painted lanterns for ceremonies, store signs, and various celebrations. We accept orders from one lantern. We also sell our original lanterns. Please feel free to contact us for lanterns that suit to your needs.



Viewing:

- Reservation required 5 to 6 people per day (Up to 1 group)
- Visit contents will vary depending on the day
- 2:00 p.m. ~
- * Please inquire with us due to the COVID-19 pandemic

Address	2-25-6, Asakusa, Taito City	☎ 03-3841-6411
Opening Hours	10:00 a.m. to 6:00 p.m.	
Closed	Tuesdays, Second and Fourth Wednesdays	
Access	10 minutes by walk from Asakusa Station, Tawaramachi Station, Ginza Line, Tokyo Metro	
Website	http://www2.plala.or.jp/Asakusa-Hanato/	

DATA

53 ★ Ginsen Izumiken [Silverware and engraving] Map E

This is a workshop, store and classroom to create original products by hammering, engraving and crafting precious metals. We also offer hands-on learning to students on school trips.

* Reservations are required for tours and hands-on learning in groups.



Viewing:- Reservation not required - Up to 10 people

- ### Hands-on Experience:-
- Reservation required Up to 8 people
 - From hammering to finishing of a silver flat ring
 - From filling, patterning and finishing silver bangles (bracelets)

A. Ring or pendant About 60 minutes Students 3,000 yen General 5,000 yen (Includes tax and material cost)
B. Bracelet About 90 minutes Students 5,000 yen General 8,000 yen (Includes tax and material cost)

Address	SDS Building 201, 2-26-5, Asakusa, Taito City	☎ 03-3841-7361
Opening Hours	10:00 a.m. to 6:00 p.m.	
Closed	Monday and Wednesday	
Access	4 minutes by walk from Asakusa Station, TX. 12 minutes by walk from Tawaramachi Station, Asakusa Station, Ginza Line	
Website	http://www.izumiken.com	

DATA

54 ★ Asakusa Amezaiku Ameshin Hanakawado Studio [Candy fashioned in human and animal forms] Map E

Amezaiku, or Japanese candy art, is a traditional Japanese art in which candies softened by heating are sculpted using traditional Japanese scissors before they cool down and harden. The Hanakawado studio offers hands-on Amezaiku classes (reservations required), displays Amezaiku works, and also sells a limited selection of candies.

* Candy sculptures and original goods are sold at the Skytree Town Soramachi shop.



Viewing:- Reservation not required
- Visit to the Amezaiku exhibit - During business hours

- ### Hands-on Experience:-
- Reservation required Up to 40 people
 - Modeling and coloring of Amezaiku (candy making)
 - About 90 to 120 minutes

High school students and below 2,500 yen General 3,100 yen

Address	Hori Building 1F, 2-9-1, Hanakawado, Taito City	☎ 080-9373-0644 (for reservations)
Opening Hours	10:30 a.m. to 6:00 p.m.	
Closed	Thursdays (Occasionally closed on other days)	
Access	5 minutes by walk from Asakusa Station, Different Railway Lines. 10 minutes by walk from Asakusa Station, TX	
Website	http://www.ame-shin.com	
Advance Reservations	Individual: Up to 2 weeks in advance Group: Please inquire with us	

DATA

55 ★ Tsujiya Honten [Geta shoes for traditional Japanese clothing] Map E

This Japanese traditional sandal (geta) shop was established in 1912. Here seasoned artisans attach the straps on geta or leather-soled geta for a perfect fit to your foot. This means your new geta will be comfortable to wear from the moment you put them on!



Viewing:

- Booking required up to 6 people
- "Participants attach sandal straps to base"
- 12:00 p.m. to 6:00 p.m.

Address	1-36-8 Asakusa, Taito City	☎ 03-3841-8171
Opening Hours	10:00 a.m. to 6:00 p.m.	
Closed	Closed irregularly	
Access	3 mins from Tokyo Metro Asakusa station (Ginza Line)	
Website	https://getaya.jp	
Advance Reservations	Up to 1 month in advance	

DATA

56 Kimpakuya UHEI [Sales of gold leaf and foil products, hands-on experience] Map E

Kimpakuya UHEI is a showroom that deals in products and sweets, where "gold leaf", "foil" and "glitter" are used in all the items. In addition to sweets, we also have drinks with ample use of gold leaf to have people feel the glitter of gold, which has been treated as a symbol of good luck since ancient times. You can also try your hand at "applying gold leaf", a rare experience in Tokyo. Enjoy applying a gold leaf to a cute design of Manekineko and make your Asakusa visit memorable.



Hands-on Experience:

- Reservation required
- Up to 4 people per session
- Apply gold leaf to a card shaped like a beckoning cat (Manekineko).
- About 30 minutes - 1,485 yen (tax included) ~ (depends on the card size)

Address	Ikeda Building 1F, 1-31-8, Asakusa, Taito City	☎ 080-3387-3325
Opening Hours	10:00 a.m. to 10:00 p.m.	
Closed	Irregular * Visit the Website for details	
Access	3 minutes by walk from Asakusa Station, Ginza Line, Tokyo Metro	
Website	http://www.kimpakuya-uehi.jp/	

DATA

57 ★ Asakusa Chazen [Experience Japanese culture] Map E

Inside the shop, there is an authentic tearoom equipped with a "tsukubai", or a traditional washbasin, and a "nijiriguchi", or a small entrance to the tearoom. This is an experience of Japanese culture that couples, friends and families can enjoy.

■ Tea ceremony experience

You can leisurely experience tea ceremony in an authentic tearoom equipped with "tsukubai" and "nijiriguchi". You can also try making matcha green tea.

■ Hands-on Japanese Café

This is a hands-on Japanese Café where you can make seasonal Japanese sweets and matcha green tea. You can choose plates and bowls to your liking, and take pictures in the photo spot that will surely look great on social networking sites.



Hands-on Experience:- Reservation required

- Tea ceremony experience 3,500 yen (tax included) (held every day from 10:00 a.m. to 1:00 p.m.)
- Lecture, preparing matcha (powdered green tea), demonstration of etiquette, Japanese sweets and matcha, preparing matcha by yourself
- Experiential Japanese Café: 1,800 yen ~ (tax included) (every Saturday, Sunday and national holidays *confirmation required)
- Hands-on experience of preparing Japanese sweets and matcha
- * A hall is available for groups Consultation required.

Address Benkyoudo Building 5F, 1-4-7, Asakusa, Taito City ☎ 03-6264-0690
Opening Hours 10:00 a.m. to 6:00 p.m.
Closed Open all year round (excluding new year holidays)
Access 3 minutes by walk from Asakusa Station, Ginza Line, Tokyo Metro
Website <https://www.chazen-co.jp/>

DATA

58 ★ Hakocho [Paulownia craftwork] Map E

Regardless of whether you prefer Edo-style or Kyoto-style, our products have long been popular as decorative items and furniture. Kimekomi technique in which pure silk fabric or Saga Brocade is used with Paulownia wood, is a magnificent decorative technique where the Paulownia wood and the warmth of the fabric blend perfectly well with each other. This completely original technique of Paulownia craftwork is exclusive to Hakocho. Hakocho brings the essence and sentiment of Edo to your home.



Hands-on Experience:- Reservation required Up to 10 ~ 30 people

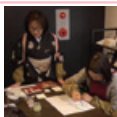
- (1) For general (Thursday once a month)
You can choose your own design and carve it with a chisel, or you can just try your hand at wooden dolls. About 120 minutes 3,300 yen ~
 - (2) For students
Experience making Kimekomi dolls using course materials About 90 minutes 2,500 yen ~
- * Visit the Website for details.

Address (Asakusa Orange Street Branch) 1-4-5, Asakusa, Taito City ☎ 03-3843-8731 (headquarters)
Opening Hours 9:00 a.m. to 6:00 p.m.
Closed Saturdays, Sundays, and holidays (Store is open all year round)
Access 3 minutes by walk from Asakusa Station, Ginza Line, Tokyo Metro
Website <http://www.hakocho.com>
Advance Reservations Up to 2 weeks in advance

DATA

59 ★ Asakusa Bunko [Small leather goods] Map E

Our beautiful leather accessories, a product of Asakusa's craftsmanship, are like an elaborate painting. Come and get the feel of Asakusa Bunko. At the Asakusa Bunko Main Store, we offer hands-on experience of hand-painted Yuzen at regular intervals. This experience is worth a visit.



Hands-on Experience:- Reservation required Up to 6 people

- Experience hand-painting of yuzen
- Irregular (weekdays only)
- * Negotiable for sessions on Saturdays, Sundays and holidays
- 1:00 p.m. to 2:00 p.m. 4,950 yen (tax included)
- * Please wear clothes you don't mind getting dirty.
- (Arm covers and aprons will be provided.)

Address YN Building 1F, 1-10-2, Asakusa, Taito City ☎ 03-5246-4093
Opening Hours 10:00 a.m. to 7:00 p.m.
Closed Open all year round
Access 4 minutes by walk from Asakusa Station, Toei Asakusa Line
Website <http://www.asakusabunko.jp/>
Advance Reservations Up to 1 week in advance

DATA

60 ★ Soukichi [Glassware] Map E

We offer hands-on classes on Kiriko glass craft through which you can experience the fun of working with glass. Please feel free to ask us about how to use the glassware, its features, and points to consider when choosing the glassware.



Hands-on Experience: Booking required up to about 36 people

- "EDO KIRIKO glass cutting"
- Duration: 90 mins approx Weekdays: 10:15am, 1:00pm, 3:00pm
- Weekends and holidays: 8:30am, 10:15am, 1:00pm, 3:00pm, 5:00pm
- Costs: 2,750 yen for children under 18 years of age (high school age) (tax excluded), 3,630 yen for general people (tax excluded).
- * A fee of 4,180 yen (tax included) applies to the 5:00 p.m. session on holidays.

Address 2-1-14 Kaminarimon, Taito City ☎ 03-6802-8948
Opening Hours Weekdays 11:00 a.m. to 7:00 p.m. Saturdays, Sundays and Holidays 10:00 a.m. to 6:00 p.m.
Closed Open through the year (Excluding year-end and New Year holidays)
Access 1 mins from Asakusa station (Ginza Line), Exit 4
Website <http://www.soukichi.co.jp>
Advance Reservations Up to 1 day in advance

DATA

61 Atelier Nakajima [Handbags/bags] Map E

We make unique bags for both formal occasions and daily use using leather, fabric and various other materials. We also hold workshops at the shop (reservation required) and accept repairs and orders for custom-made bags.

* Please bring scissors and an apron.

* Students on school trips are not accepted.



Viewing:

- Reservation required Up to 6 people
- Handbag making processes (cutting, etc.) 1:00 p.m. to 4:00 p.m.

Hands-on Experience:

- Reservation required Up to 4 groups/day
- Simple charm and bag making
- About 60 to 120 minutes 1,500 yen ~

Address 2-7-3, Komagata, Taito City ☎ 03-3843-8215
Opening Hours 9:30 a.m. to 6:30 p.m.
Closed Saturdays, Sundays and holidays
Access 3 minutes' walk from Asakusa Station, Toei Asakusa Line
Advance Reservations Up to 2 weeks in advance

DATA

62 ★ Tsumami-zaiku Ichirindo [Shop specializing in tsumami-zaiku (traditional craft of creating fabric flowers)] Map F

Tsumami-zaiku Ichirindo sells special materials and tools for tsumami-zaiku, sells and distributes hair accessories for the Shichigosan festival and coming-of-age ceremony, and holds full-fledged workshops for people who want to learn the craft.

We also offer hands-on tsumami-zaiku experiences. Be sure to enjoy the traditional craft, which can be enjoyed by people of all ages as part of school trips, field trips and company welfare programs.



Hands-on Experience:

- Inquiry necessary

Address Jupiter Five Bldg., 2F, 4-11-2, Kuramae, Taito City ☎ 03-4360-3294 ✉ info@tsumami-j.com
Opening Hours 11:00 a.m. to 6:00 p.m.
Closed Irregularly on Mondays and holidays
Access 3 minutes' walk from Kuramae Station, Toei Asakusa Line
Website <https://tsumami-ichirindo.com/>
Advance Reservations Up to 1 week in advance (up to 1 month in advance for groups)

DATA

63 ★ Sun Beadle [Bead handicraft] Map F

The shop specializes in various types of beads, kits, and handicraft items. In the bead weaving class, you can learn the technique of bead weaving using looms of various sizes, while making bags and corsages. You can also learn to make bead handicraft without using a loom.



Viewing:

- Reservation required Up to 5 people (2 sessions per day)
- Making bead handicrafts Third Fridays 10:30 a.m. to 3:30 p.m.

Hands-on Experience:

- Reservation required Up to 5 people (2 sessions per day)
- Making bead handicrafts (Creation of small articles and accessories)
- 10:30 a.m. to 3:30 p.m. (Day of the week is flexible)
- About 60 to 120 minutes 1,100 yen (tax included)

Address 1-12-2, Yanagibashi, Taito City ☎ 03-3861-9322
Opening Hours 10:30 a.m. to 6:00 p.m.
Closed Saturdays, Sundays and Holidays
Access 1 minute walk from Asakusabashi Station on JR Sobu Line and Toei Asakusa Line
Website <http://www.sun-beadle.com>
Advance Reservations Up to 10 days in advance

DATA

64 ★ Tsumami-zaiku Asakusa Komaki [Hands-on tsumami-zaiku experience] Map E

We hold hands-on experience sessions of tsumami-zaiku (craft of creating fabric flowers designated as a traditional craft by the Tokyo Metropolitan Government) using adhesive bond. Make your one and only work while enjoying all the processes starting from choosing fabric.



Viewing:

- Reservation required
- Viewing of how to make five-petal flowers (free)

Hands-on Experience:

- Reservation required 4 people (up to 3 groups/day)
- Tsumami-zaiku using adhesive bond
- 60 minutes 2,200 yen 90 minutes 3,300 yen
- Motifs vary by season.

Address 1-29-8, Asakusa, Taito City ☎ 03-5811-1953
Opening Hours 11:00 a.m. to 6:00 p.m.
Closed Irregularly
Access 5 minutes' walk from Asakusa Station, Ginza Line, Tokyo Metro
Website <https://komasa-asakusa.com>

DATA

Dogin Doki-ten [Copperware] [Map C](#)

Our shop, which was established in 1924, specializes in copperware. Our omelet pans, tempura pots, teapots, kettles, cups and frying pans are especially popular. Everything is handmade. Be sure to visit us. You can have a hands-on experience of making a pen stand (1,600 yen).



Viewing:

- Reservation required Up to about 5 people
- Viewing of copperware production process
(Content varies by the day's work)

Address 4-22-10, Asakusa, Taito City 📞 03-3872-7328

Opening Hours 9:00 a.m. to 6:00 p.m.

Closed Irregularly

Access 7 minutes' walk from TX Asakusa Station

2 minutes' walk from Asakusa 4-chome stop of Metropolitan bus (Ue 46)

Advance Reservations Up to about 2 weeks in advance

DATA