

Personal Edition

# Arakawa River Hazard Flood Disaster Map

~ In case of flood in Arakawa River ~

What evacuation activity should you take?

Is inundation assumed in your area?

Yes

No

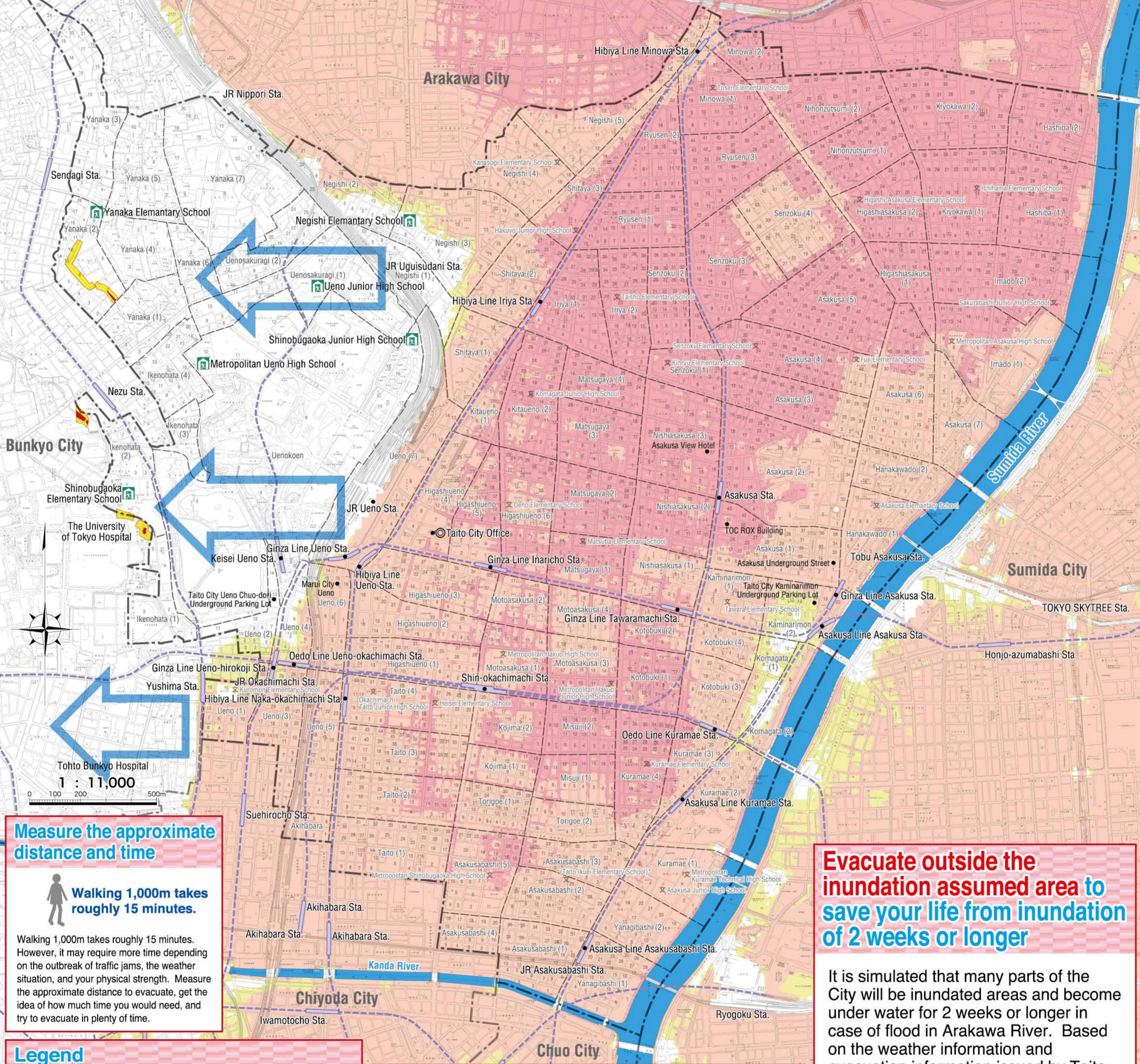
Inundation will last more than 2 weeks. Evacuate outside the inundation assumed area as you may become isolated.

You need not evacuate. Be careful of inland inundation and landslide disaster. Even if damages are not simulated, if your area is lower than the surrounding areas, check the information from the Japan Meteorological Agency (JMA) and the City and evacuate as necessary.

### [Inundation Assumed Area]

#### About the Arakawa River Flood Disaster Hazard Map (Inundation Assumed Area)

This map, based on "Flood and Inundation Assumed Area Map of Arakawa River of the Arakawa River Water System" (as of September 2018) created by the Ministry of Land, Infrastructure, Transport and Tourism (MLIT), shows the assumed inundation area and height in case of flood in Arakawa River caused by heavy rain, so that it may help the residents' evacuation. The areas and the level of inundation damages are simulated based on the maximum assumable rainfall (total rainfall of 632mm in 72 hours in the Arakawa River basin) however, they may depend on the forms of rainfall and land. Therefore, it does not mean that heavy rain will always cause inundation damages shown on this map. When an evacuation is encouraged, the city will issue evacuation information such as evacuation instructions. Please pay enough attention to various weather and evacuation information.



### Measure the approximate distance and time

Walking 1,000m takes roughly 15 minutes.

Walking 1,000m takes roughly 15 minutes. However, it may require more time depending on the outbreak of traffic jams, the weather situation, and your physical strength. Measure the approximate distance to evacuate, get the idea of how much time you would need, and try to evacuate in plenty of time.

### Legend

Simulated inundation height in case of flood (rank classification)

- Areas with inundation of 3.0 m ~ below 5.0 m
- Areas with inundation of 0.5 m ~ below 3.0 m
- Areas with inundation below 0.5 m

- City Office
- Evacuation Shelter
- Direction to Evacuate
- City Boundary
- Town/Chome Boundary
- River
- Subway/Underground Railroad
- Underground Mall and Other Facilities
- Landslide Disaster Caution Zone
- Landslide Disaster Special Caution Zone

### Approximate Inundation Height That was Assumed

#### Color Codes of Inundation Height

3.0 m ~ below 5.0 m

0.5 m ~ below 3.0 m  
below 0.5 m



### Evacuate outside the inundation assumed area to save your life from inundation of 2 weeks or longer

It is simulated that many parts of the City will be inundated areas and become under water for 2 weeks or longer in case of flood in Arakawa River. Based on the weather information and evacuation information issued by Taito City, evacuate early to your friend's or relative's places, hotels, etc. outside the inundation assumed area.

[Note] Taito City will issue a "Voluntary Extensive Evacuation Information" that encourages evacuation outside the inundation assumed area at early stages (before issuing Alert Level 3) when flood is simulated in Arakawa River.

[Note] If there is not enough time to evacuate outside the inundation assumed area, evacuate to the 3rd floor or higher in a building.

## Evacuation Tips

### Before you leave home

#### Act voluntarily

- Check the latest weather and evacuation information on TV and radio.
- When you feel the danger in the way the rain falls and in the situation of the inundation, don't wait for the evacuation instructions and act voluntarily to evacuate.



#### Check which evacuation routes and destinations are safe

- Discuss with your family the safe route to the evacuation destination. Rivers and bridges are not the only dangerous places; underpasses and underground streets are also unsafe.
- See if you can include in your evacuation destination places where you can evacuate safely, such as your friend's or relative's place, or hotels outside the inundation assumed area, etc.



#### Outfits / Actions

- Never act alone. Always try to take action in a group of more than two persons.
- Wear comfortable clothes when you evacuate.
- Do not forget to take your survival kit with you.
- Boots are dangerous as they can catch your feet in the water. Wear sneakers. Sandals are dangerous too.



#### When you leave home, don't forget to...

- Turn off the gas main.
- Turn off the circuit breaker.
- Inform your acquaintances and relatives that you are evacuating.



### After you have left home

#### Think of persons requiring special care and consideration

- Elderly, children, and persons requiring special care and considerations should start evacuating early.
- If there are people in your neighborhood, such as the elderly, who will need time to evacuate and require special care and consideration, offer to evacuate together.



#### Things to beware of when you walk

- A person can walk in the water as deep as about 50cm. If the stream is fast, even shallower places can be dangerous.
- Use long sticks and umbrellas as walking sticks and check if gutter or manhole covers are still on.
- Do not approach cut-off power lines.



#### Do not evacuate by car

- Flooded roads make it impossible to move your car. When the depth of the water increases, there is a danger of the whole car washing away.
- Evacuation by car may get in the way of emergency vehicles or get caught in traffic jams, risking your early evacuation.
- Except for early and extraordinary evacuations that involve sick persons or those requiring special care and consideration, avoid evacuating by car.

#### Evacuation to underground spaces are risky

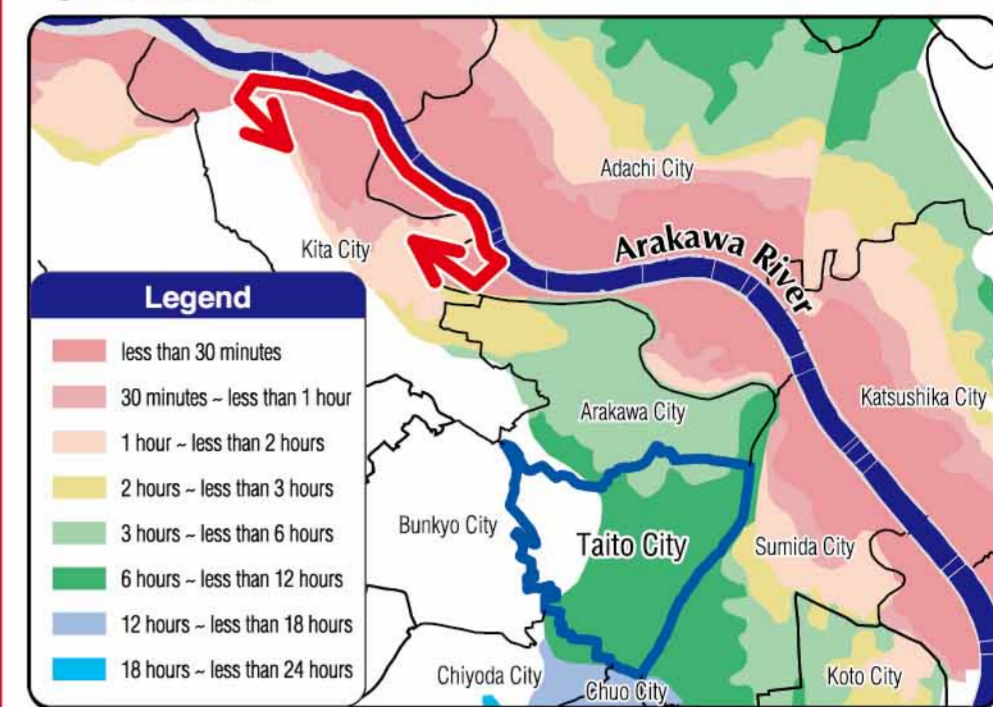
- You will not be able to open doors due to the water pressure of the inundation.
- You will not be able to climb up the stairs due to the force of water.
- There will be possibilities of electricity outage due to the inundation.



If you are late for the evacuation, evacuate to the third floor or above of a robust building and wait for the rescue to come.

## Simulation of a flood in Arakawa River leading to inundation in Taito City (In case a burst occurs between Metropolitan Expressway Route No.6 Mukojima Line and Sasame Bridge)

- Northern Taito City will get inundated in as short as 3-6 hours and two-thirds of the city in 6-12 hours.
- When there are bursts at different locations, the time leading to inundation may give or take some.



## Survival Kit / Stockpiles

### Survival kit

#### Tips

- Put the things you will be taking with you when you evacuate in a backpack etc. so that you can take it out immediately.
- What you will need depends on each person or family, such as pairs of glasses, household medicine, and powdered milk. Prepare for the things that are necessary for yourself.

#### Valuables

- Cash
- ID
- Cards
- Spare keys (home, car, etc.)

#### Drink/food

- Drinking water (in plastic bottles)
- Emergency food (hardtack, canned food, etc.)

#### Information sources

- Portable radio
- Battery chargers of mobile phones, etc.
- Extra batteries
- Writing tools / memo pad

#### Sanitary goods

- Anti-infection goods (masks, etc.)
- Tissue paper / wet wipes
- Portable toilet

#### Daily supplies

- Flashlight (with batteries set)
- Cotton work gloves / leather gloves
- Towels / furoshiki (wrapping cloth)
- Plastic bags
- Utility knife
- Raincoat / rain gear / basic protection against cold
- Extra clothes / slippers
- Disposable body warmer

### Stockpiles

#### Tips

- When a disaster occurs, the lifeline will be cut down and the logistics stop. You will not be able to lead a daily life. In addition, the top priorities in the first 72 hours of a disaster outbreak are fire extinguishment and life saving; other supports from the government will take time.
- Keep stockpiles per your or your family's situation at all times.
- Keep your daily food on stock rotation (see right) so that you'll be able to eat what you always eat, even at times of emergency.

#### Drink/food

- Drinking water
- Rice / instant rice
- Vacuum-packed food / canned food / dried food / seasoning

#### Things you need when you eat

- Paper plates / paper cups / disposable chopsticks
- Food wraps
- Can opener / utility knife
- Plastic water tank
- Gas cartridge tabletop stove / extra gas cartridge

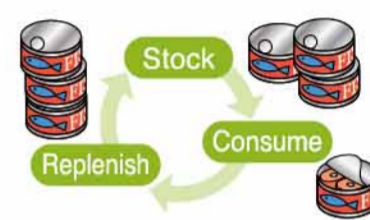
#### Daily supplies

- Toothbrushes / oral care goods
- Clothes (seasonal ones) / blankets
- Blue tarps (to prevent leaking of rain)
- Tools (crowbar, hammer, etc.)
- Duct tape / permanent marker
- Plastic bags (small/medium/large) / handbag
- Newspaper (can be used in many ways)
- Towel
- Batteries
- Candles
- Cardboard
- Masking tape
- Portable toilet

Prepare for at least 3 days' (preferably 1 week's) worth of stockpile.

### Stock daily by stock rotation

- "Stock rotation" is to have extra amount of food you eat daily and replenish the amount you have used to be prepared for disasters. In this way, you will be able to spend a close-to-daily life even in disaster, while keeping the stockpile fresh.



### Support for emergency supply purchases

20% discount is available for emergency supply purchases. For more information, please refer to the flyer shown on the right, distributed at the Taito City Crisis & Disaster Management Section (10th floor of the City Hall), municipal offices, district centers, etc. (The design may depend from time to time.)



Taito City joins forces with Tokyo Katsushika Welfare Factory to offer support for emergency supply purchases.

## Collect information

Various information is available at times of disaster. Always try to obtain the latest.

Taito City official website  
<https://www.city.taito.lg.jp/>

Outdoor speakers for emergency administration radio system phone answering service  
03-5246-4057

Taito City official Twitter account



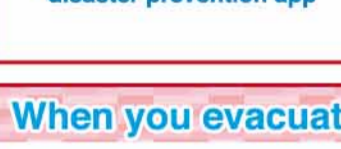
Taito City official LINE account



Taito City disaster prevention weather information e-mail newsletter



Taito City disaster prevention app



TV (digital data broadcasting @) / radio, etc.



Early warning e-mail "Area Mail"



## When you evacuate...

### 1 Evacuation information (to encourage evacuation)

< Issued by Taito City with designated areas >

When there is a danger of a disaster outbreak at times of wind and flood damage, the city issues an evacuation information with an **alert level**. The evacuation information is issued by the city and is based on the disaster prevention weather information issued by Japan Meteorological Agency, etc.

Alert Level	Evacuation Information	Actions to take
Level 3	Evacuation of the Elderly, Etc.	Elderly etc. should evacuate from hazardous places!
Level 4	Evacuation Instruction	Everyone should evacuate from hazardous places!
Level 5	Emergency Safety Measures	The disaster is already here. Take the best action possible to save your life!

When Arakawa River is assumed to flood, the city will issue information for a voluntary evacuation to a wider area, even prior to Alert Level 3. Evacuate outside the inundation assumed area.

### 2 Disaster prevention weather information (on weather/river conditions)

< Issued by Japan Meteorological Agency, etc. >

JMA issues the disaster prevention weather information along with the **information equivalent to alert levels**. The disaster prevention weather information will serve as a guideline for the residents and facility managers etc. to take voluntary evacuation actions, however, it may include information that is not directly associated with Taito City. When you evacuate, refer to the City's evacuation information and take appropriate evacuation actions.

Alert Level	Weather emergency warning, advisory, etc.	Designated river flood forecast	Actions to take
Level 1	Probability of Warnings (Possibilities of warning level)	—	Raise awareness to disasters by checking on the latest disaster prevention and weather information, etc.
Level 2	Heavy rain advisory Flood advisory Storm surge advisory	Flood warning information	Use the hazard map etc. to check the areas where disasters are assumed, where to evacuate, and your evacuation route.
Level 3 (equivalent)	Heavy rain warning (landslide disaster) Flood warning Storm surge advisory	Flood caution information	Pay attention to the <b>Evacuation of the Elderly</b> , etc. issued by the City. If you need time to evacuate, decide yourself to do so.
Level 4 (equivalent)	Landslide alert information Storm surge emergency warning Storm surge warning	Flood hazard information	Pay attention to the Evacuation Instruction issued by the City. Even when the Evacuation Instruction is not issued yet, start evacuating if you figure out that you are in danger.
Level 5 (equivalent)	Heavy rain emergency warning (landslide disaster)	Flood outbreak information	It is highly likely that the disaster is already here. Please take the best action possible to save your life.

## Websites to obtain information on rainfalls and river water levels

<b>JMA</b> Contents: Offers weather forecasts. Website address: <a href="https://www.jma.go.jp/">https://www.jma.go.jp/</a>	<b>Arakawa-Karyu River Office</b> Contents: Offers water levels and rainfalls in Arakawa river, as well as live camera footage. Website address: <a href="https://www.ktr.mlit.go.jp/arage/">https://www.ktr.mlit.go.jp/arage/</a>
<b>River disaster prevention information (MLIT)</b> Contents: Offers real-time rainfalls and river water levels nationwide. Website address: <a href="https://www.river.go.jp/">https://www.river.go.jp/</a>	<b>Tokyo Amesh</b> Contents: Offers real-time rainfall in Tokyo. Website address: <a href="https://tokyo-ame.jwa.or.jp/">https://tokyo-ame.jwa.or.jp/</a>
<b>Tokyo Metropolitan Flood Control Integrated Information System</b> Contents: Offers flood control information issued by the Tokyo Metropolitan Government. Website address: <a href="http://www.kasen-suibo.metro.tokyo.jp/">http://www.kasen-suibo.metro.tokyo.jp/</a>	<b>Taito City Office</b> Contents: Offers information on flood control and weather information in Taito City. Website address: <a href="https://www.city.taito.lg.jp/">https://www.city.taito.lg.jp/</a>

## If you are staying at home...

When there is a flood in Arakawa River, it is expected that the inundation may last as long as more than 2 weeks. Therefore the lifelines (electricity, gas, water, etc.) will be dead and you will have difficulties to live. You will need to evacuate to a safe area where inundations will not occur. However, if you can only stay home, it is preferred that you stock two weeks' worth of water and food. Stockpiles towards the loss of lifelines will also be necessary.

### Simulation of a living environment if you stay home

When there is a flood in Arakawa River, in addition to the inundation lasting two weeks, the lifeline (electricity, gas, water and sewerage) will stop too. Your living environment will turn as shown on the illustration on the right.

#### <What you can do beforehand>

- Decide where to evacuate outside the inundation assumed area (your friend's or relative's place, hotel, etc.)
- If it is almost impossible for you to evacuate outside the inundation assumed area, have two week's worth of stockpile (especially water, food, and portable toilets) ready.

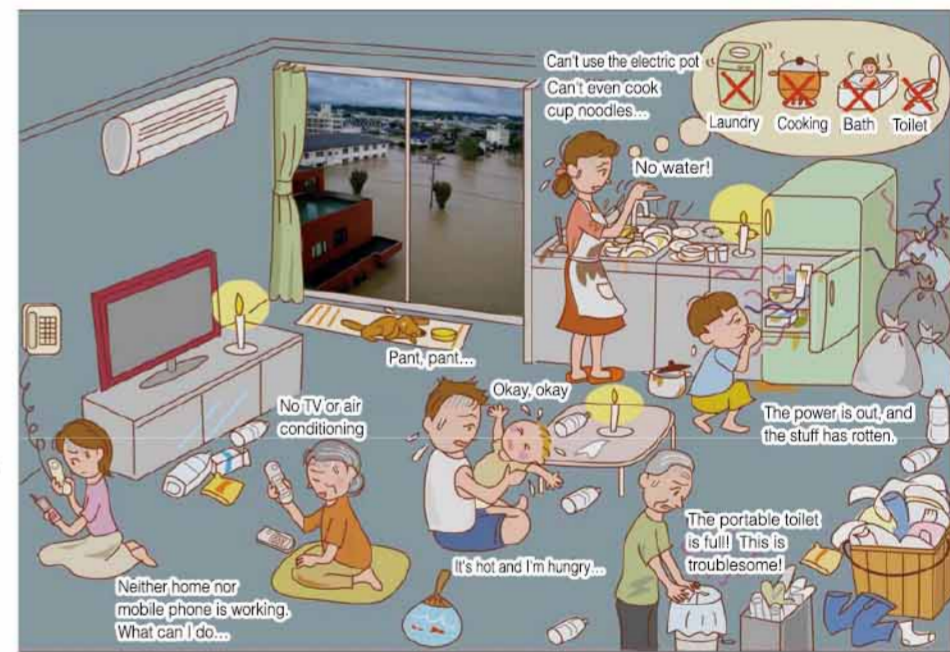


Illustration source: Central Disaster Management Council "Reference Materials of the Expert Committee on Countermeasures against Large-Scale Flooding"

## Evacuation action checklist

Use this checklist to acknowledge in advance the expected inundation height of your home, workplace, etc., where to evacuate, etc.

### 1 How high is the inundation expected at your home or workplace, etc.?

- below 0.5 m  0.5 m ~ below 3.0 m  3.0 m ~ below 5.0 m

### 2 Decide where to evacuate (friend's or relative's place, hotel, etc. outside the inundation assumed area)

- [ ] (e.g. ---'s place) [ ] (e.g. Hotel in ---)

### 3 Write down on the map the evacuation route from home or workplace, etc.

### 4 Write down the contacts of your family or neighbors, etc., who will evacuate with you or need assistance.

Name	Phone	Address / Workplace / School etc.

Besides "Arakawa River Flood Disaster Hazard Map", Taito City also creates and publicizes other hazard maps on inundation by Kanda River water, storm surge, inland inundation due to heavy rain, and landslide disaster. These maps can be found on Taito City's official website as well.

Inquiries on "Taito City Arakawa River Flood Disaster Hazard Map"

Taito City Crisis & Disaster Management Section ☎ 03-5246-1092  
Published March 2022 / 令和3年度登録第13号